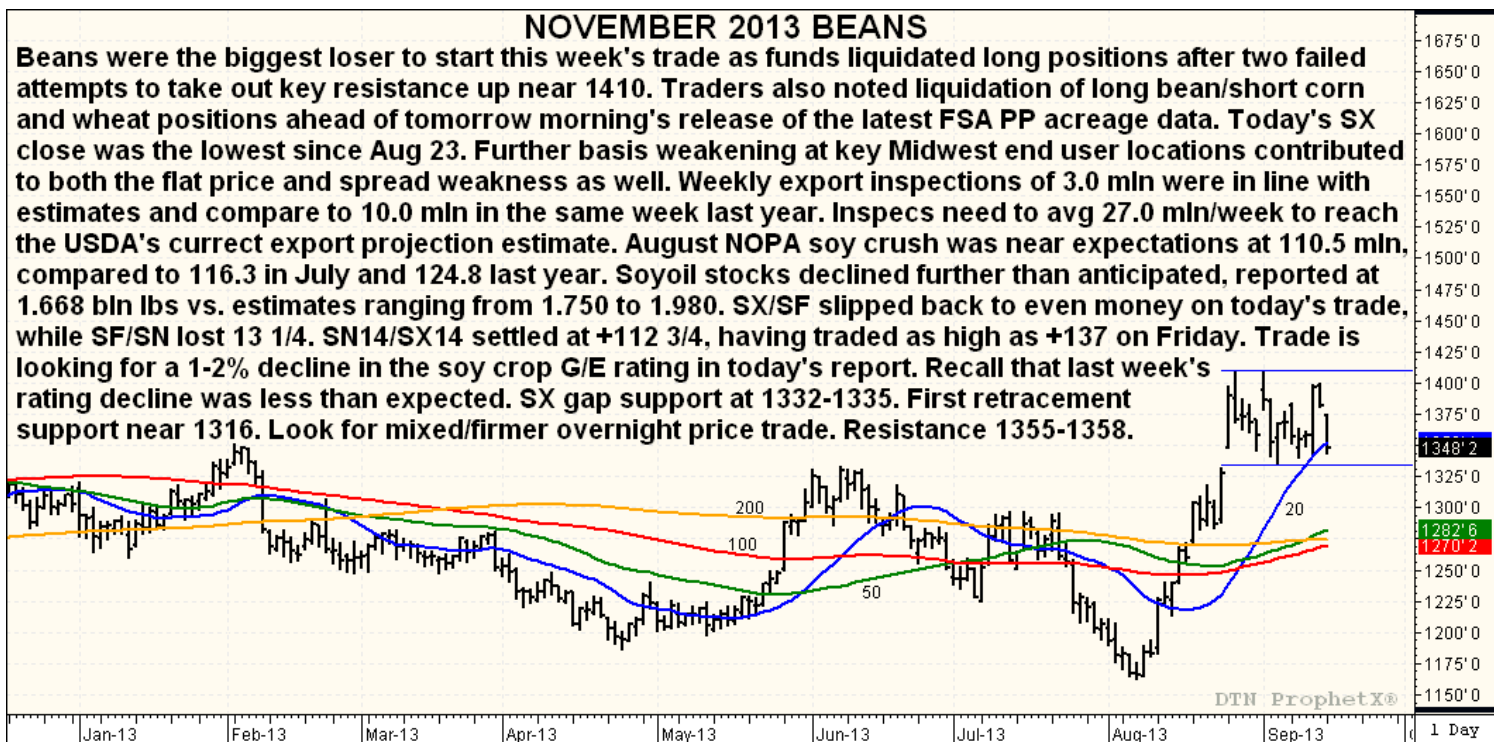
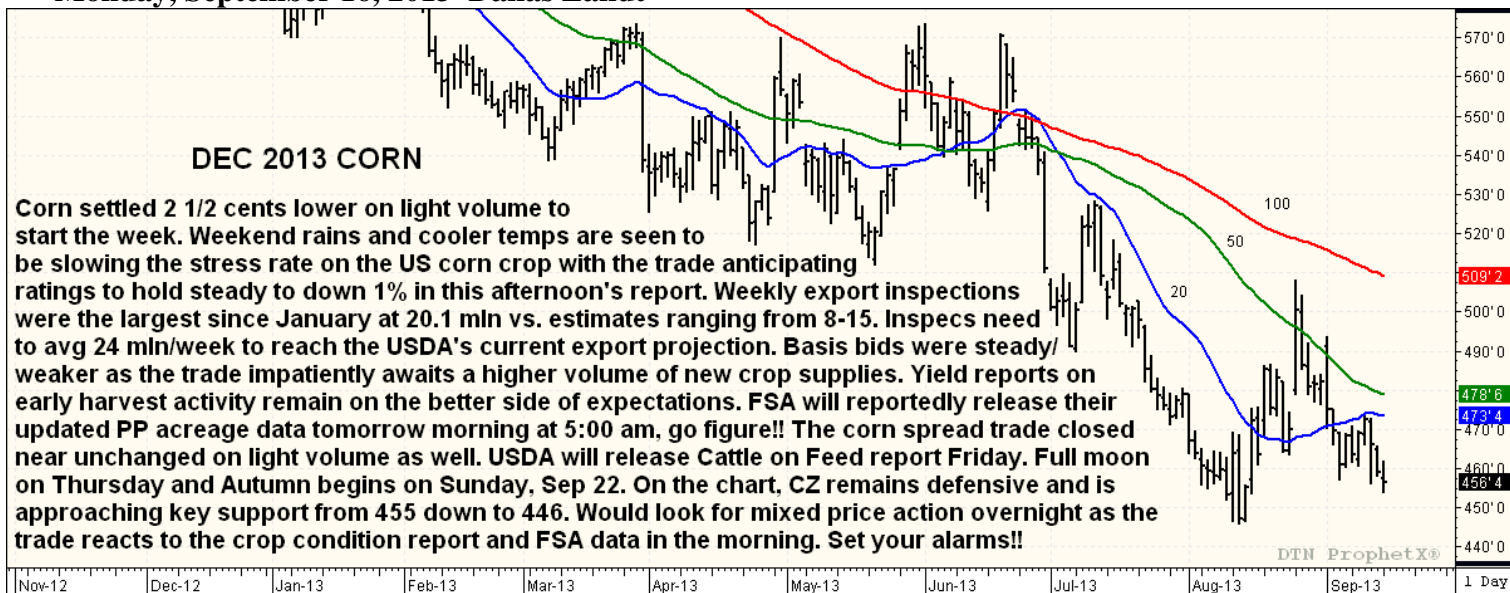
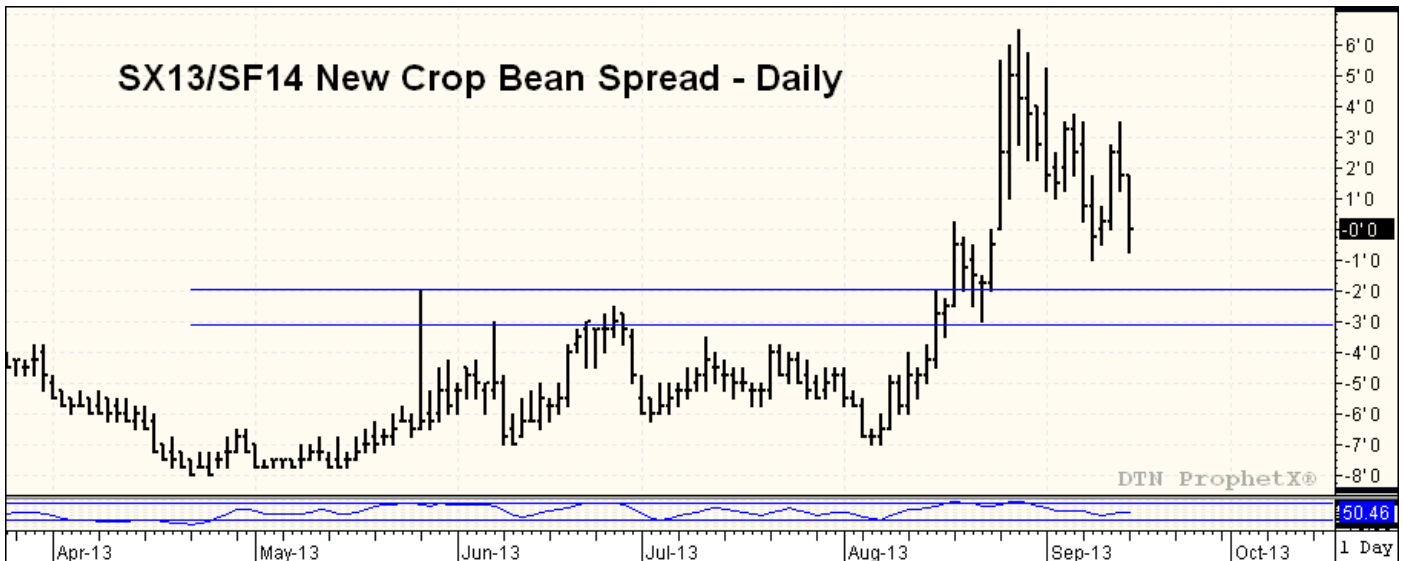
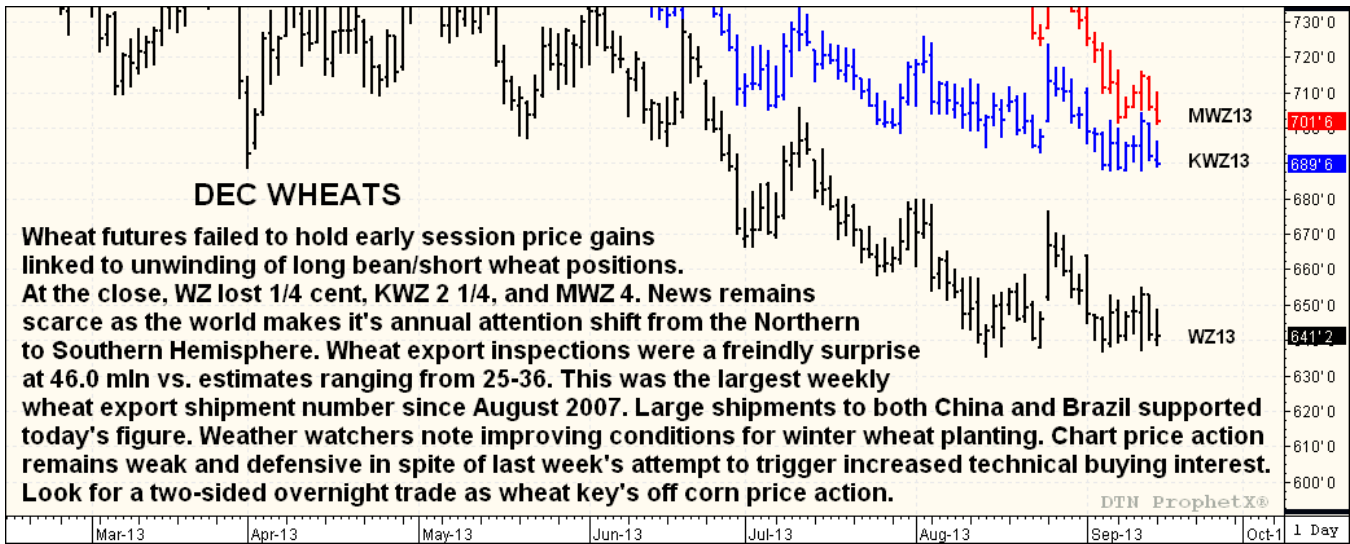


Monday, September 16, 2013 Dallas Landt

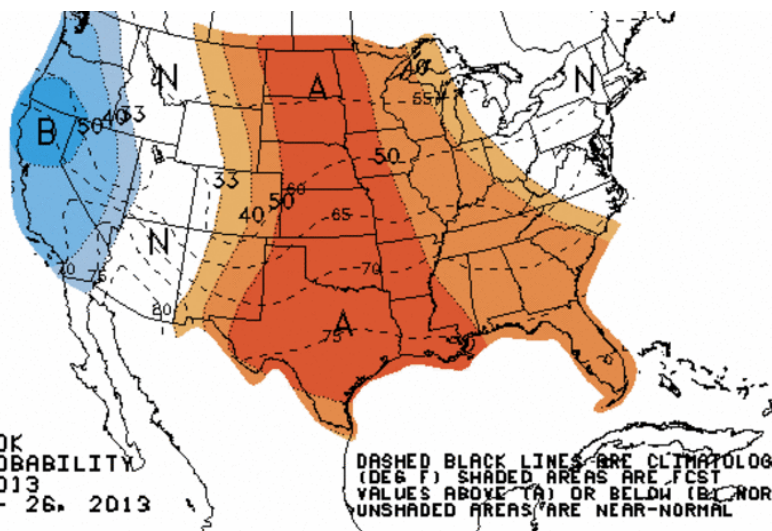




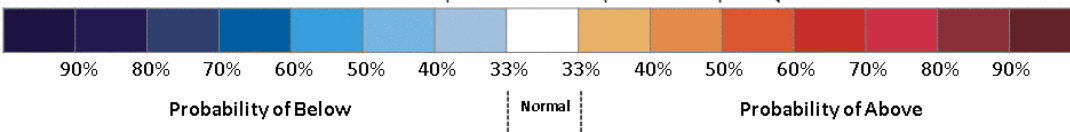
Information contained in this letter is taken from sources which we believe to be reliable, but is not guaranteed by us as to accuracy or completeness and is sent to you for information purposes only.



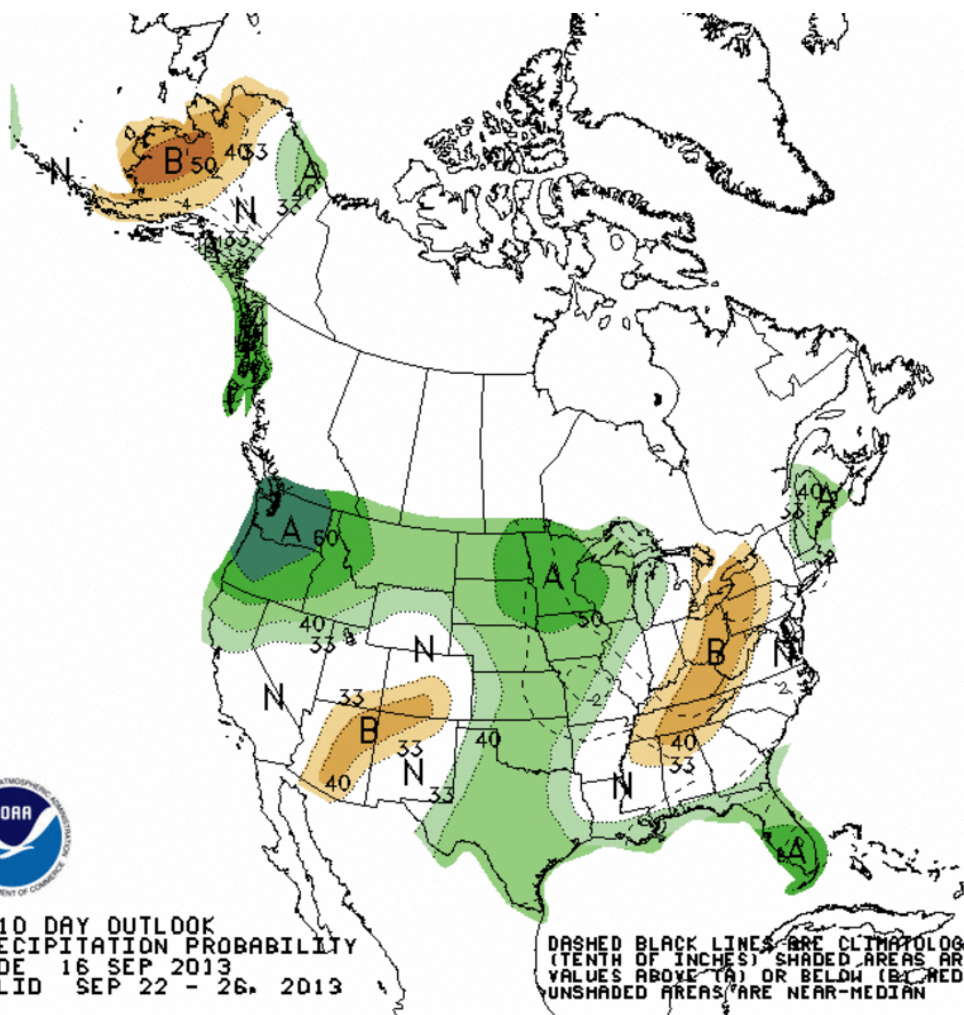
6-10 DAY OUTLOOK
TEMPERATURE PROBABILITY
MADE 16 SEP 2013
VALID SEP 22 - 26, 2013



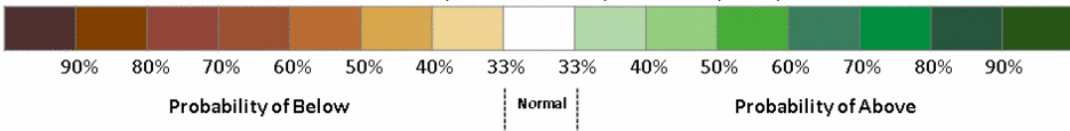
DASHED BLACK LINES ARE CLIMATOLOGY (DEG F) SHADED AREAS ARE FCS VALUES ABOVE (A) OR BELOW (B) NORMAL UNSHADED AREAS ARE NEAR-NORMAL



6-10 DAY OUTLOOK
PRECIPITATION PROBABILITY
MADE 16 SEP 2013
VALID SEP 22 - 26, 2013



DASHED BLACK LINES ARE CLIMATOLOGY (TENTH OF INCHES) SHADED AREAS ARE FCS VALUES ABOVE (A) OR BELOW (B) MEDIAN UNSHADED AREAS ARE NEAR-MEDIAN



Information contained in this letter is taken from sources which we believe to be reliable, but is not guaranteed by us as to accuracy or completeness and is sent to you for information purposes only.