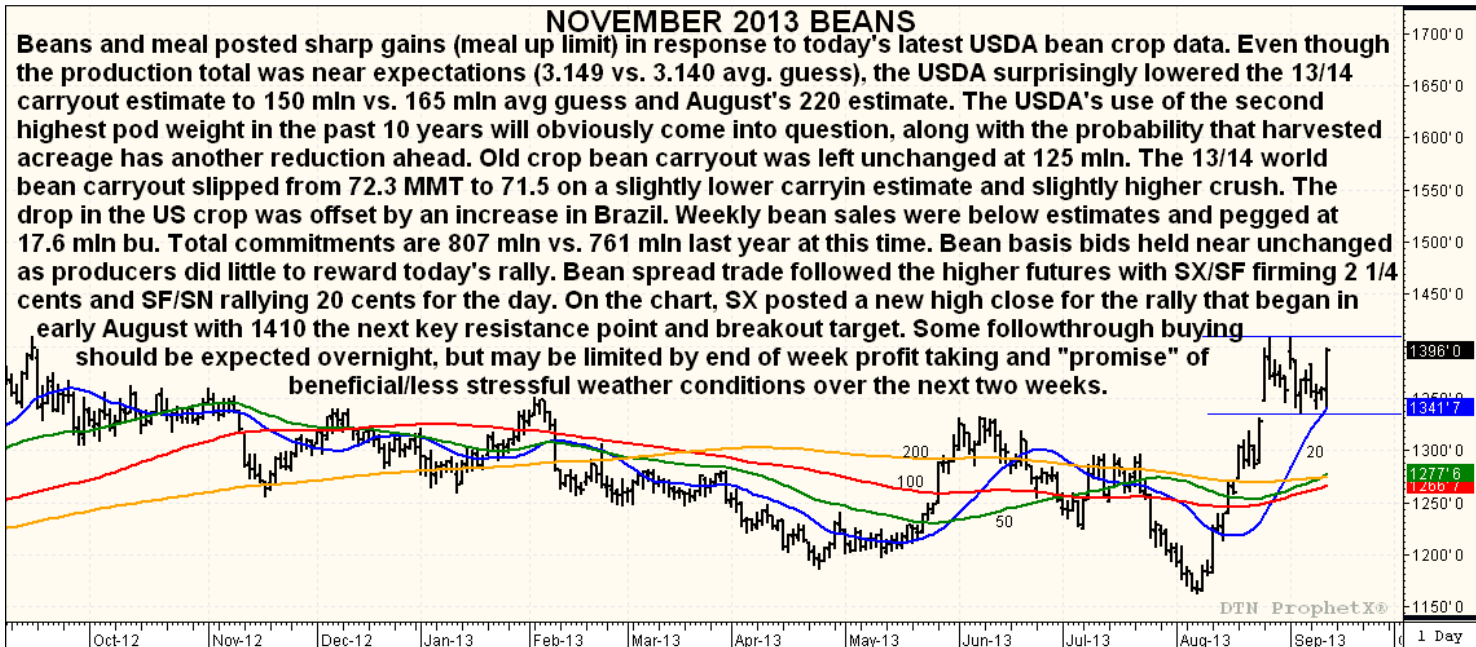
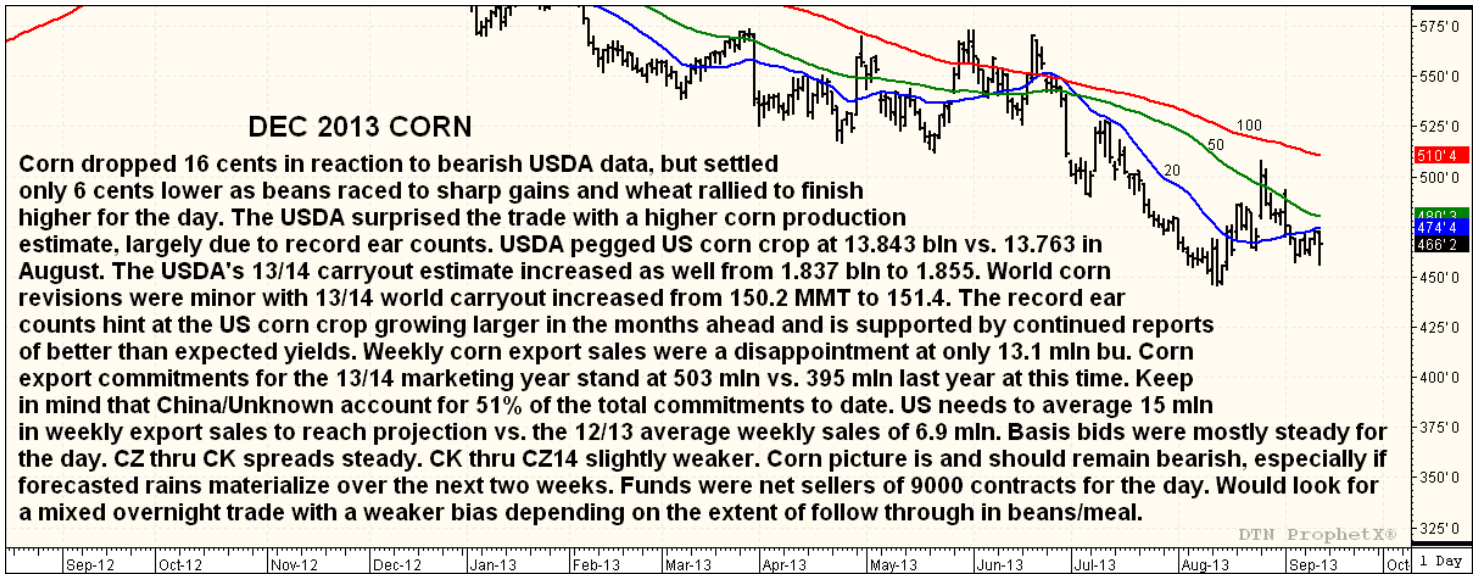
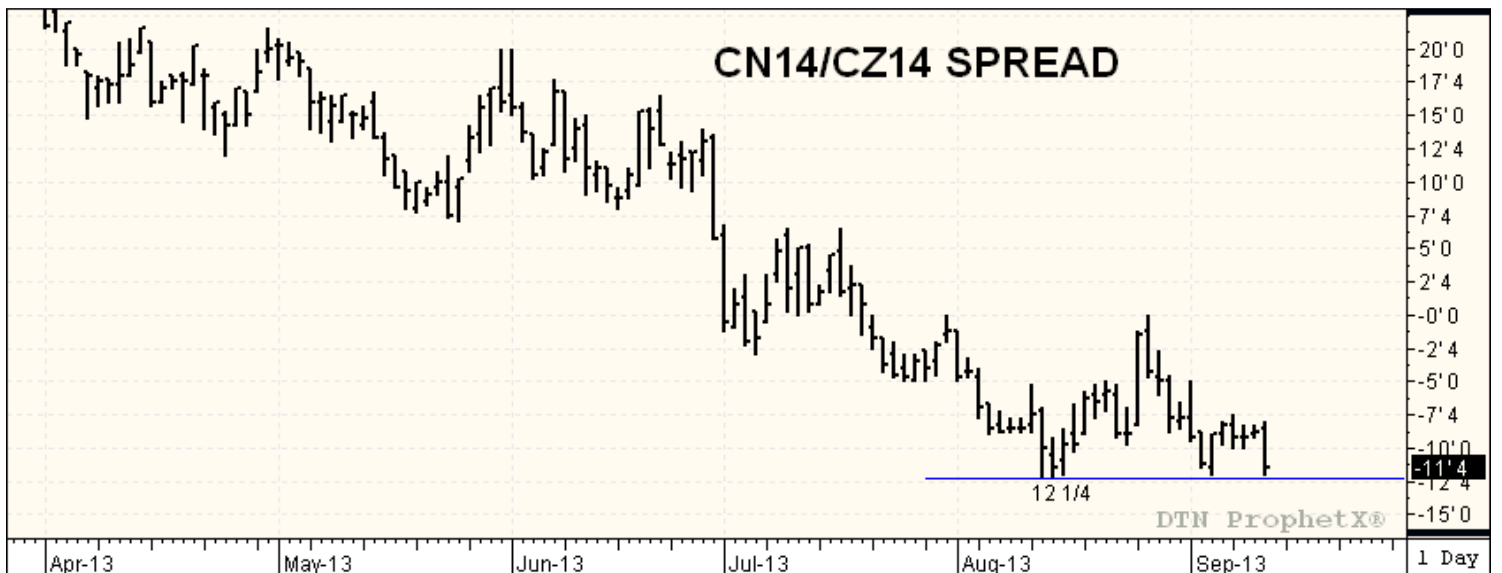
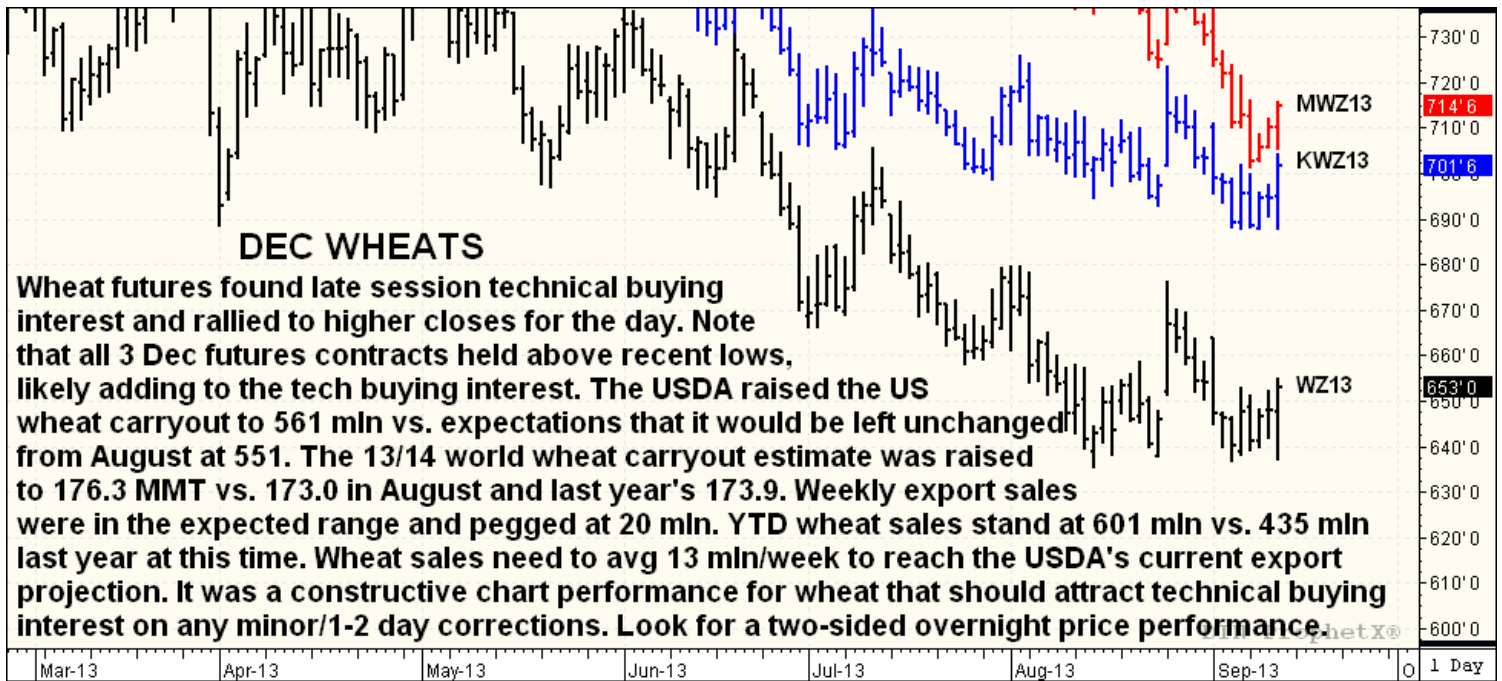


Closing Grain & Soybean Comments

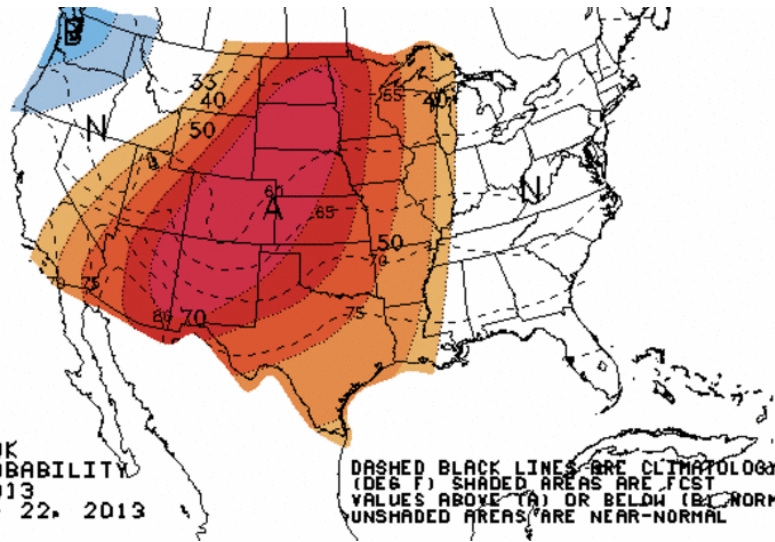
Dallas Landt Thursday September 12, 2013



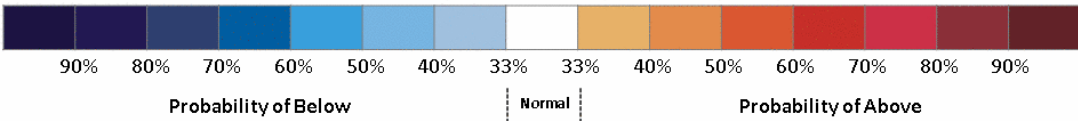




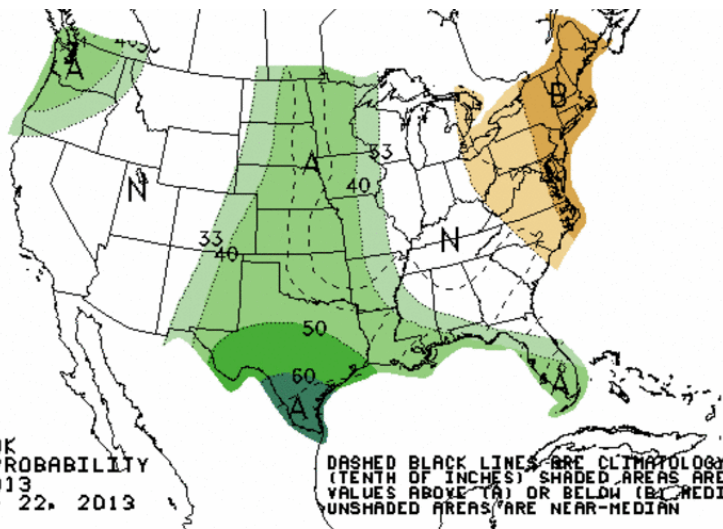
6-10 DAY OUTLOOK
TEMPERATURE PROBABILITY
MADE 12 SEP 2013
VALID SEP 18 - 22, 2013



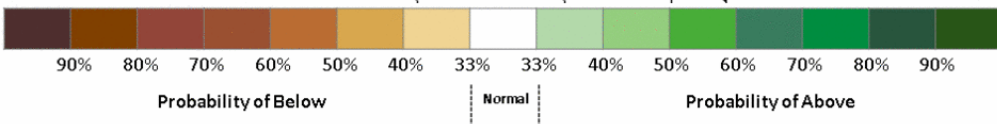
DASHED BLACK LINES ARE CLIMATOLOGY (DEG F) SHADED AREAS ARE FCS VALUES ABOVE (A) OR BELOW (B) NORMAL UNSHADED AREAS ARE NEAR-NORMAL



6-10 DAY OUTLOOK
PRECIPITATION PROBABILITY
MADE 12 SEP 2013
VALID SEP 18 - 22, 2013



DASHED BLACK LINES ARE CLIMATOLOGY (TENTH OF INCHES) SHADED AREAS ARE FCS VALUES ABOVE (A) OR BELOW (B) MEDIAN UNSHADED AREAS ARE NEAR-MEDIAN



This material has been prepared by a sales or trading employee or agent of R.J. O'Brien and is, or is in the nature of, a solicitation. This material is not a research report prepared by R.J. O'Brien's Research Department. By accepting this communication, you agree that you are an experienced user of the futures markets, capable of making independent trading decisions, and agree that you are not, and will not, rely solely on this communication in making trading decisions.

DISTRIBUTION IN SOME JURISDICTIONS MAY BE PROHIBITED OR RESTRICTED BY LAW. PERSONS IN POSSESSION OF THIS COMMUNICATION INDIRECTLY SHOULD INFORM THEMSELVES ABOUT AND OBSERVE ANY SUCH PROHIBITION OR RESTRICTIONS. TO THE EXTENT THAT YOU HAVE RECEIVED THIS COMMUNICATION INDIRECTLY AND SOLICITATIONS ARE PROHIBITED IN YOUR JURISDICTION WITHOUT REGISTRATION, THE MARKET COMMENTARY IN THIS COMMUNICATION SHOULD NOT BE CONSIDERED A SOLICITATION.

The risk of loss in trading futures and/or options is substantial and each investor and/or trader must consider whether this is a suitable investment. Past performance, whether actual or indicated by simulated historical tests of strategies, is not indicative of future results. Trading advice is based on information taken from trades and statistical services and other sources that R.J. O'Brien believes are reliable. We do not guarantee that such information is accurate or complete and it should not be relied upon as such. Trading advice reflects our good faith judgment at a specific time and is subject to change without notice. There is no guarantee that the advice we give will result in profitable trades.