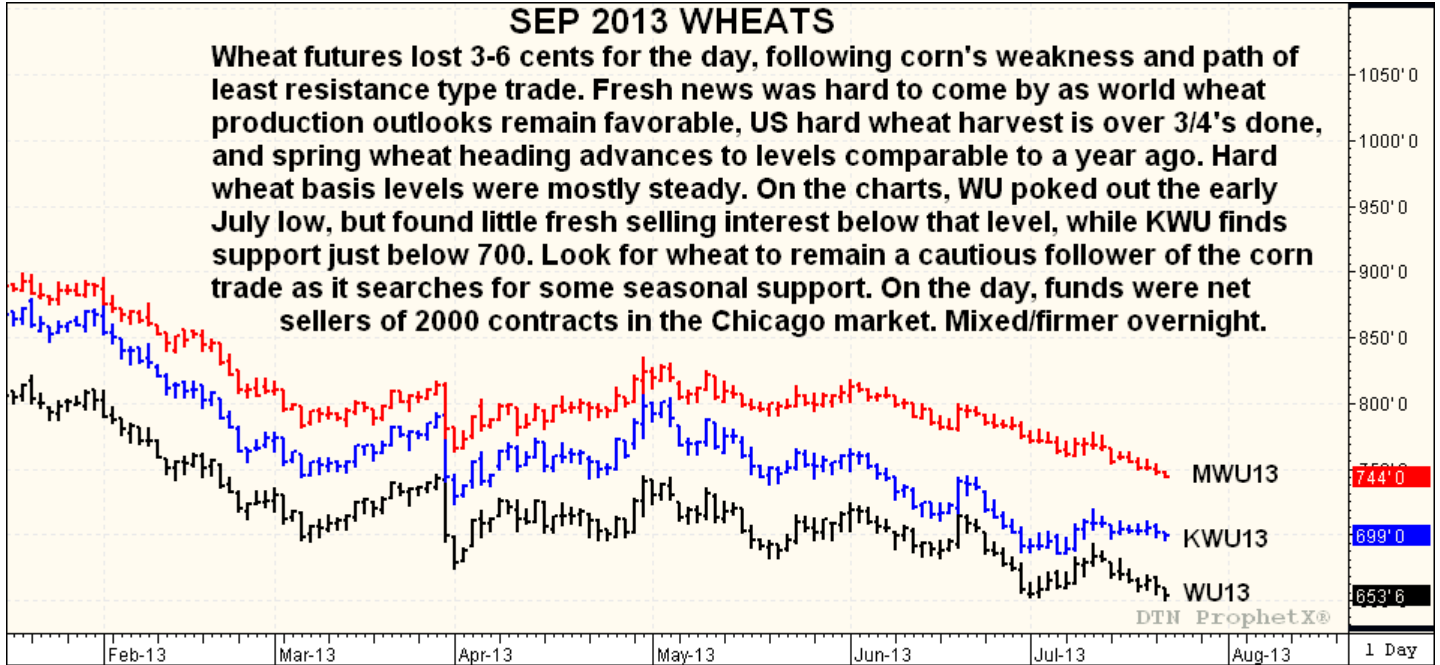
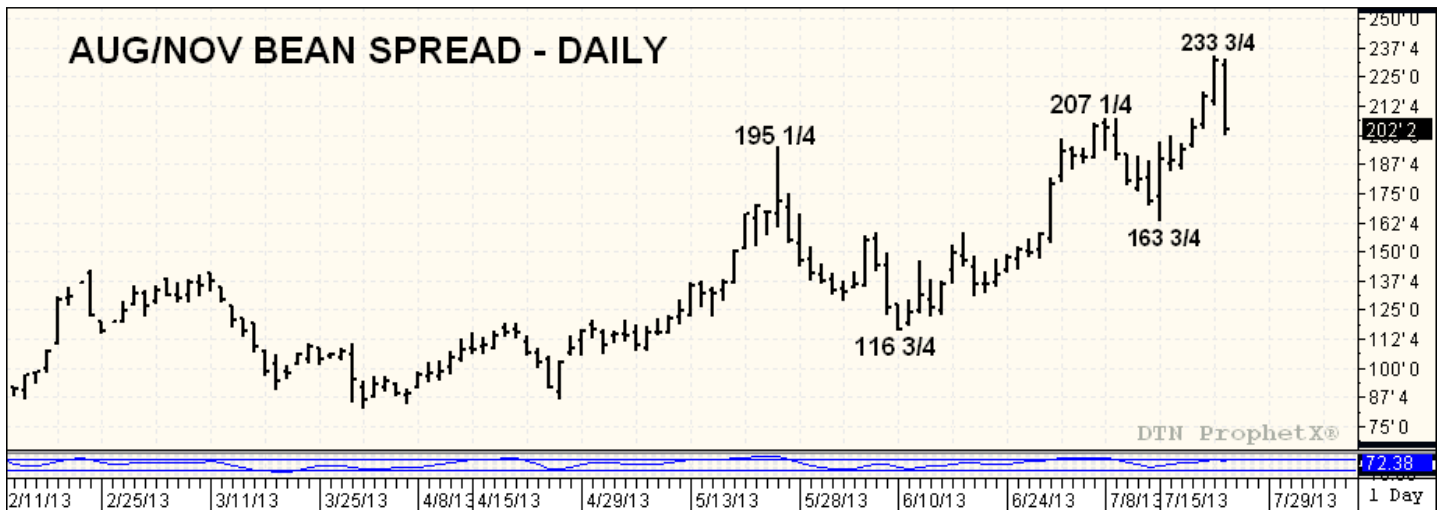


### SEP 2013 WHEATS

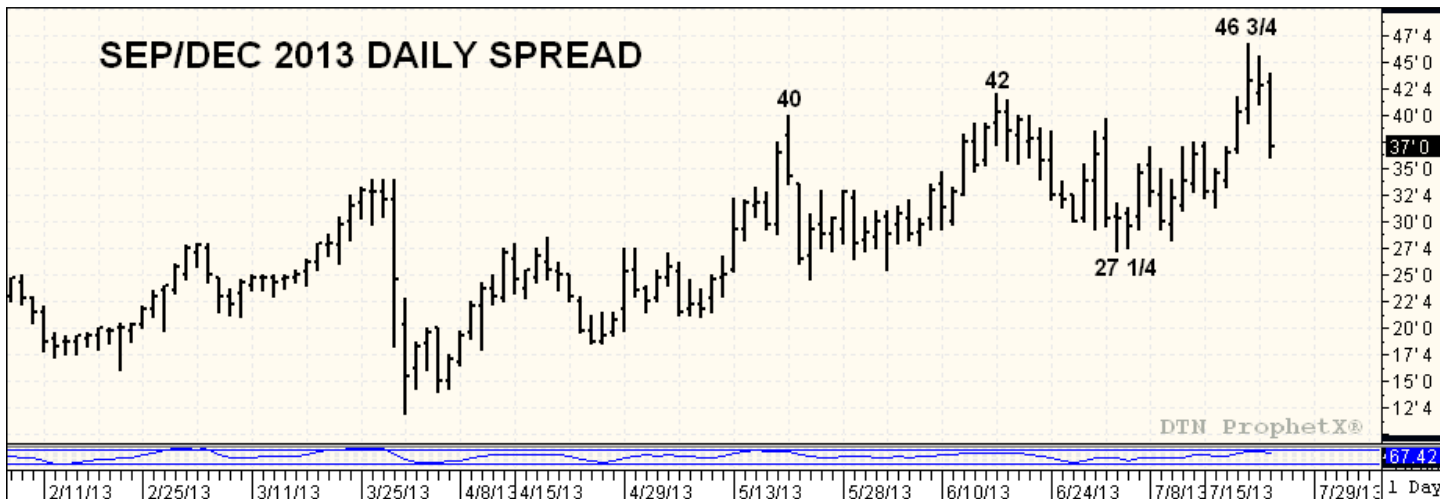
Wheat futures lost 3-6 cents for the day, following corn's weakness and path of least resistance type trade. Fresh news was hard to come by as world wheat production outlooks remain favorable, US hard wheat harvest is over 3/4's done, and spring wheat heading advances to levels comparable to a year ago. Hard wheat basis levels were mostly steady. On the charts, WU poked out the early July low, but found little fresh selling interest below that level, while KWU finds support just below 700. Look for wheat to remain a cautious follower of the corn trade as it searches for some seasonal support. On the day, funds were net sellers of 2000 contracts in the Chicago market. Mixed/firmer overnight.

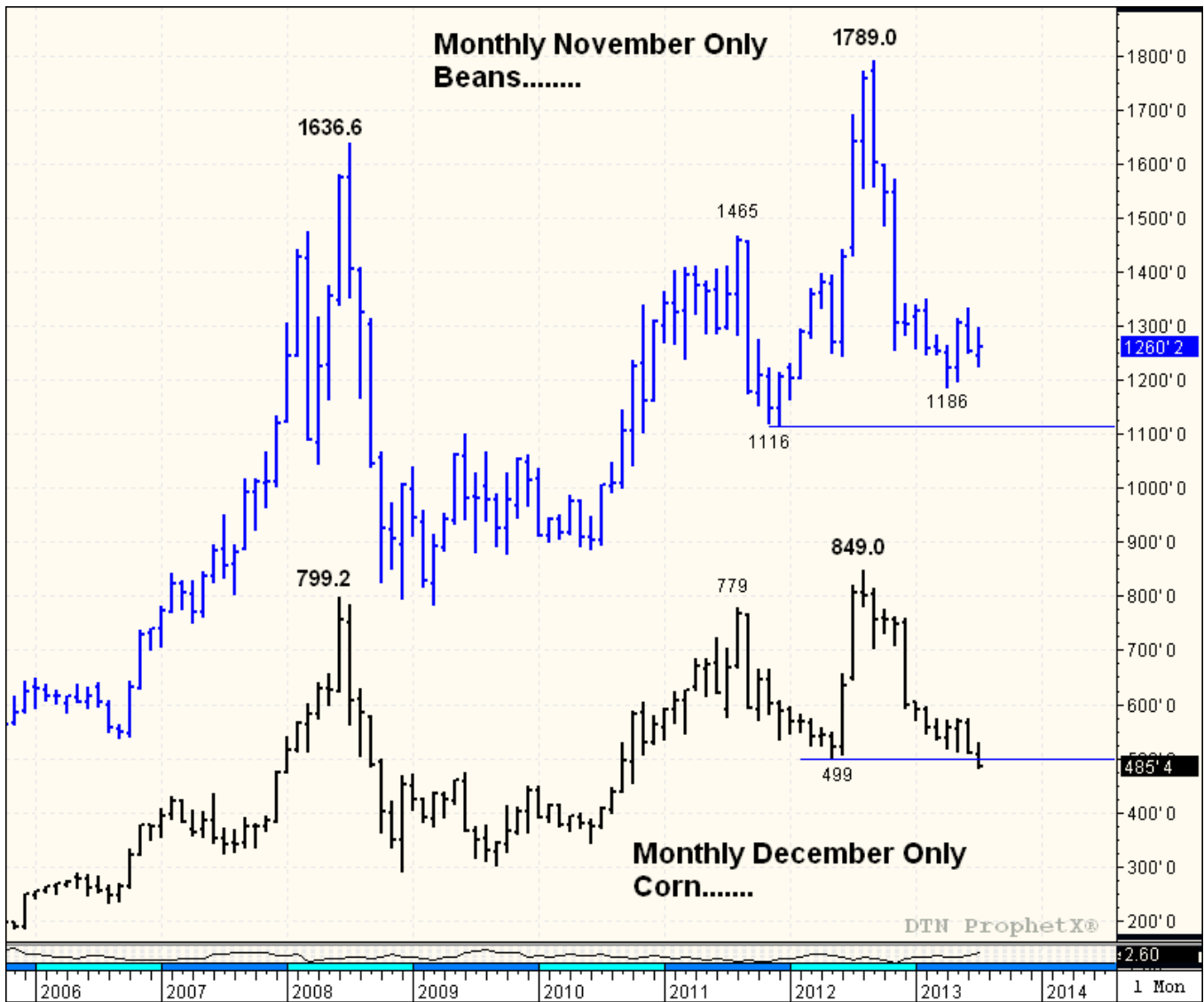


### AUG/NOV BEAN SPREAD - DAILY



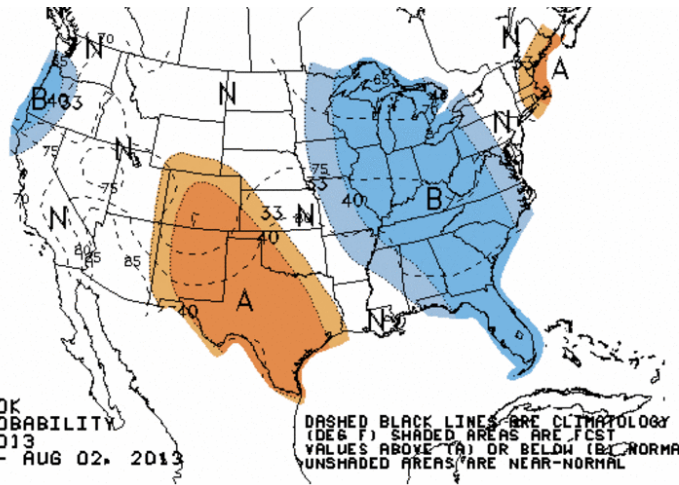
### SEP/DEC 2013 DAILY SPREAD



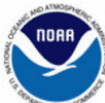
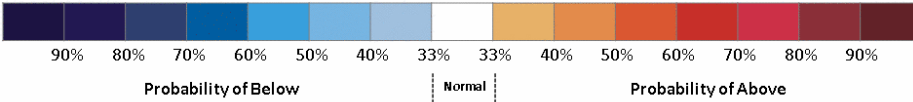




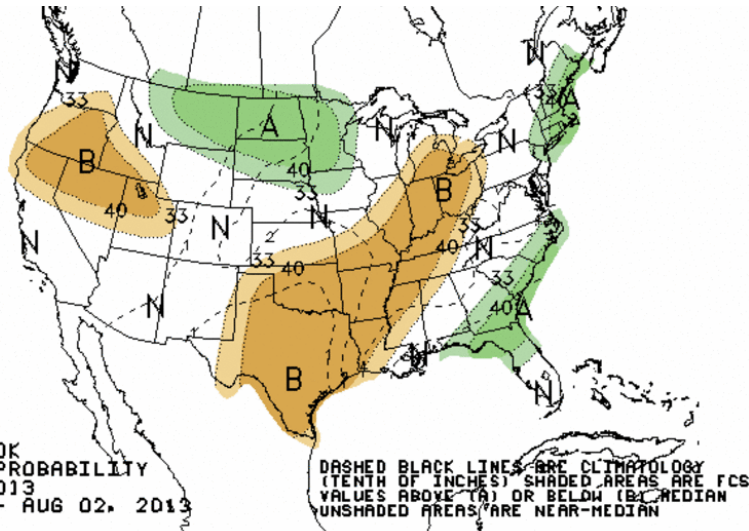
6-10 DAY OUTLOOK  
TEMPERATURE PROBABILITY  
MADE 23 JUL 2013  
VALID JUL 29 - AUG 02, 2013



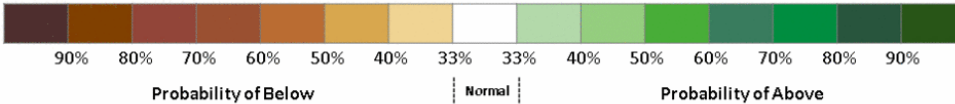
DASHED BLACK LINES ARE CLIMATOLOGY (DEG F) SHADED AREAS ARE FCS VALUES ABOVE (A) OR BELOW (B) NORMAL UNSHADED AREAS ARE NEAR-NORMAL



6-10 DAY OUTLOOK  
PRECIPITATION PROBABILITY  
MADE 23 JUL 2013  
VALID JUL 29 - AUG 02, 2013



DASHED BLACK LINES ARE CLIMATOLOGY (TENTH OF INCHES) SHADED AREAS ARE FCS VALUES ABOVE (A) OR BELOW (B) MEDIAN UNSHADED AREAS ARE NEAR-MEDIAN



**This material has been prepared by a sales or trading employee or agent of R.J. O'Brien and is, or is in the nature of, a solicitation.** This material is not a research report prepared by R.J. O'Brien's Research Department. By accepting this communication, you agree that you are an experienced user of the futures markets, capable of making independent trading decisions, and agree that you are not, and will not, rely solely on this communication in making trading decisions.

DISTRIBUTION IN SOME JURISDICTIONS MAY BE PROHIBITED OR RESTRICTED BY LAW. PERSONS IN POSSESSION OF THIS COMMUNICATION INDIRECTLY SHOULD INFORM THEMSELVES ABOUT AND OBSERVE ANY SUCH PROHIBITION OR RESTRICTIONS. TO THE EXTENT THAT YOU HAVE RECEIVED THIS COMMUNICATION INDIRECTLY AND SOLICITATIONS ARE PROHIBITED IN YOUR JURISDICTION WITHOUT REGISTRATION, THE MARKET COMMENTARY IN THIS COMMUNICATION SHOULD NOT BE CONSIDERED A SOLICITATION.

The risk of loss in trading futures and/or options is substantial and each investor and/or trader must consider whether this is a suitable investment. Past performance, whether actual or indicated by simulated historical tests of strategies, is not indicative of future results. Trading advice is based on information taken from trades and statistical services and other sources that R.J. O'Brien believes are reliable. We do not guarantee that such information is accurate or complete and it should not be relied upon as such. Trading advice reflects our good faith judgment at a specific time and is subject to change without notice. There is no guarantee that the advice we give will result in profitable trades.