

Grainscoop I

Sent: Monday, June 17, 2013 3:57 PM

Subject: RJOMRT: USDA Weekly Crop Progress Recap

Things to Note:

Nationally, corn conditions up 1 but corn conditions in the Big 3: IA -2, IL -1, NE unch.

Soybean plantings furthest behind in AR, IA, MN, MO, and WI.

Soybeans 64% G-E nationally, not far off average of 66%

Nice improvement in Spring wheat conditions. All major growing states improved.

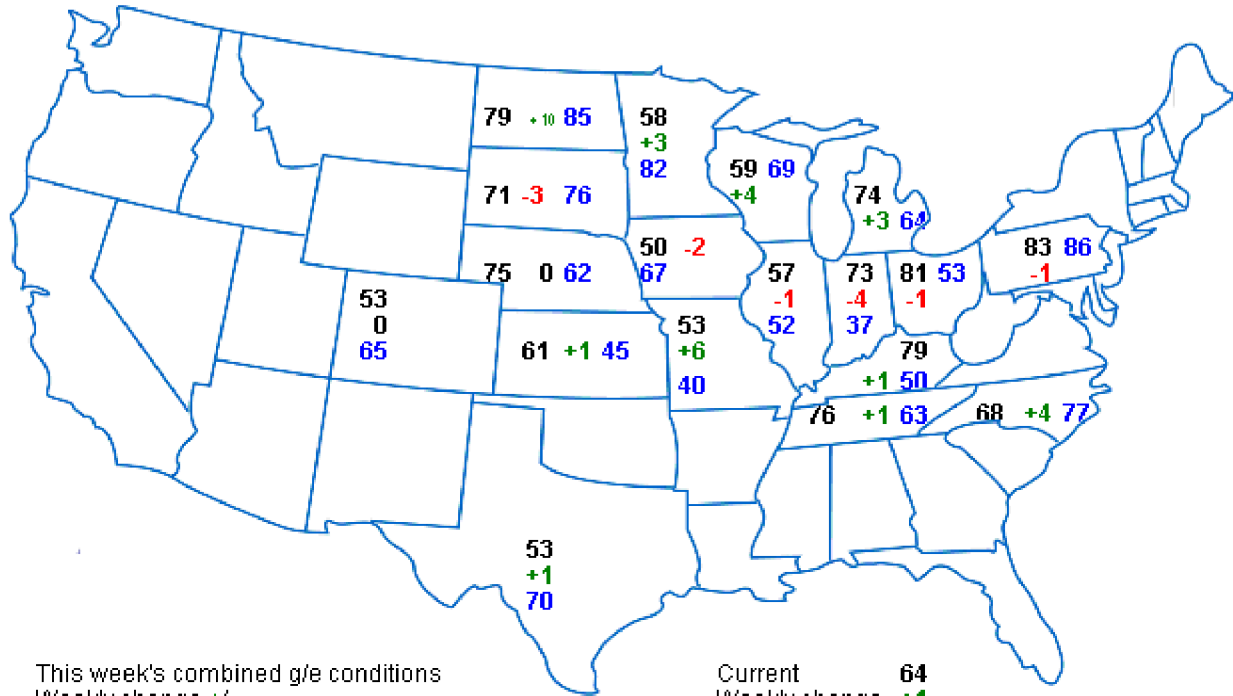
See below and attached recap from RJOMRT.



USDA Weekly Crop Progress Recap -by Randy Mittelstaedt

- U.S. corn conditions improve slightly
- Initial soybean conditions above 5-year average
- U.S. soybean planting advances as expected, but massive IL jump
- Winter wheat harvest remains slow
- Spring wheat crop conditions improve nicely

U.S. Corn Conditions



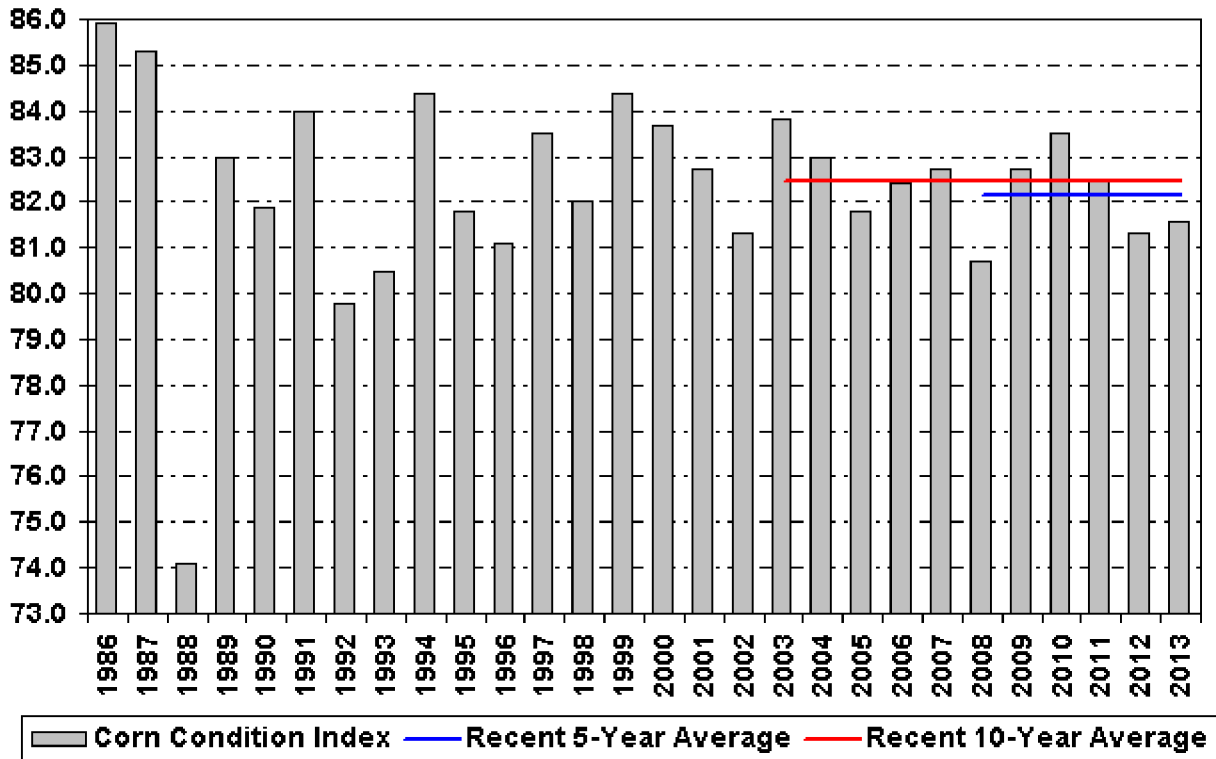
This week's combined g/e conditions
 Weekly change +/-
 Last year's g/e conditions

Current **64**
 Weekly change **+1**
 Last year **63** U.S. Total for: 16-Jun

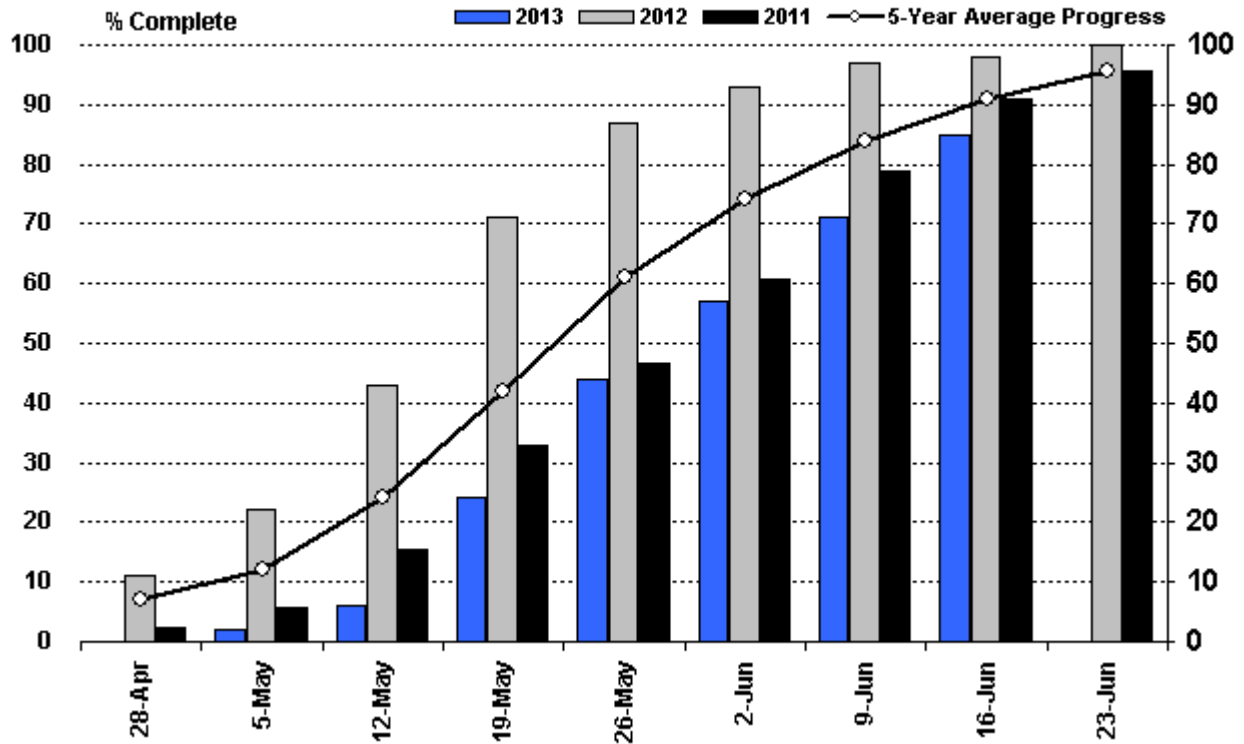
U.S. Corn Crop Conditions

	Combined Good/Excellent				Combined Poor/Very Poor			
	This Week	Last Week	Weekly Change	Last Year	This Week	Last Week	Weekly Change	Last Year
CO	53	53	+0	65	16	18	-2	10
IL	57	58	-1	52	11	13	-2	13
IN	73	77	-4	37	4	2	+2	24
IA	50	52	-2	67	16	14	+2	8
KS	61	60	+1	45	8	8	+0	14
KY	79	78	+1	50	4	4	+0	16
MI	74	71	+3	64	4	4	+0	12
MN	58	55	+3	82	8	8	+0	2
MO	53	47	+6	40	10	11	-1	21
NE	75	75	+0	62	2	2	+0	7
NC	68	64	+4	77	3	5	-2	1
ND	79	69	+10	85	2	5	-3	2
OH	81	82	-1	53	2	2	+0	11
PA	83	84	-1	86	1	1	+0	3
SD	71	74	-3	76	5	5	+0	4
TN	76	75	+1	63	7	6	+1	12
TX	53	52	+1	70	11	9	+2	4
WI	59	55	+4	69	6	10	-4	6
U.S.	64	63	+1	63	8	8	+0	9

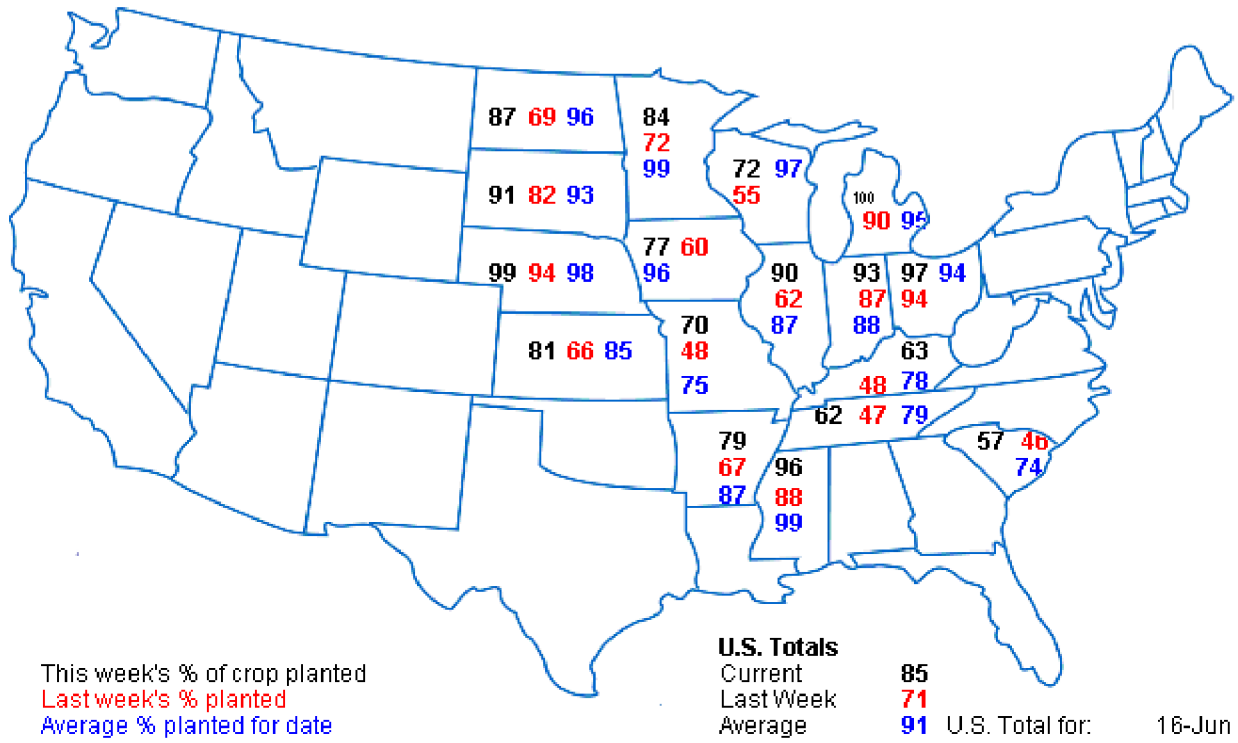
RJO MRT U.S. Corn Crop Condition Index as of Mid-June



US Soybean Planting Progress

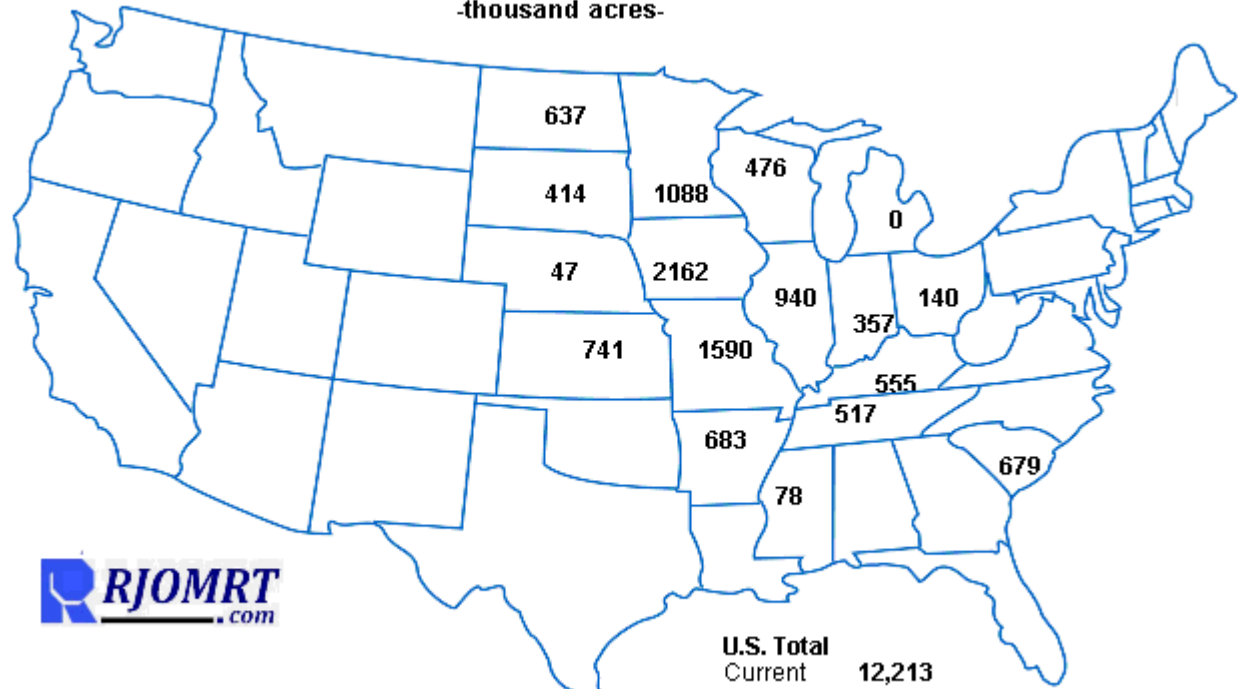


U.S. Soybean Planting Progress



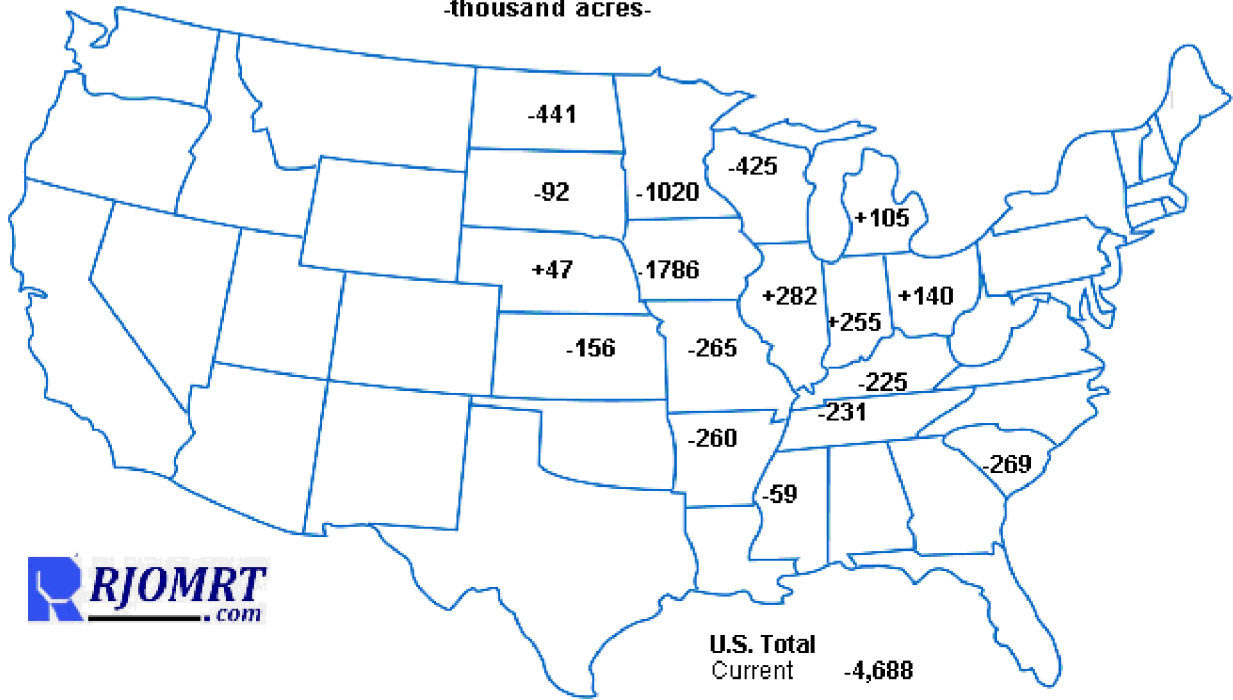
U.S. Estimated Soybean Acreage Still Unplanted (as of 6/16/13)

-thousand acres-

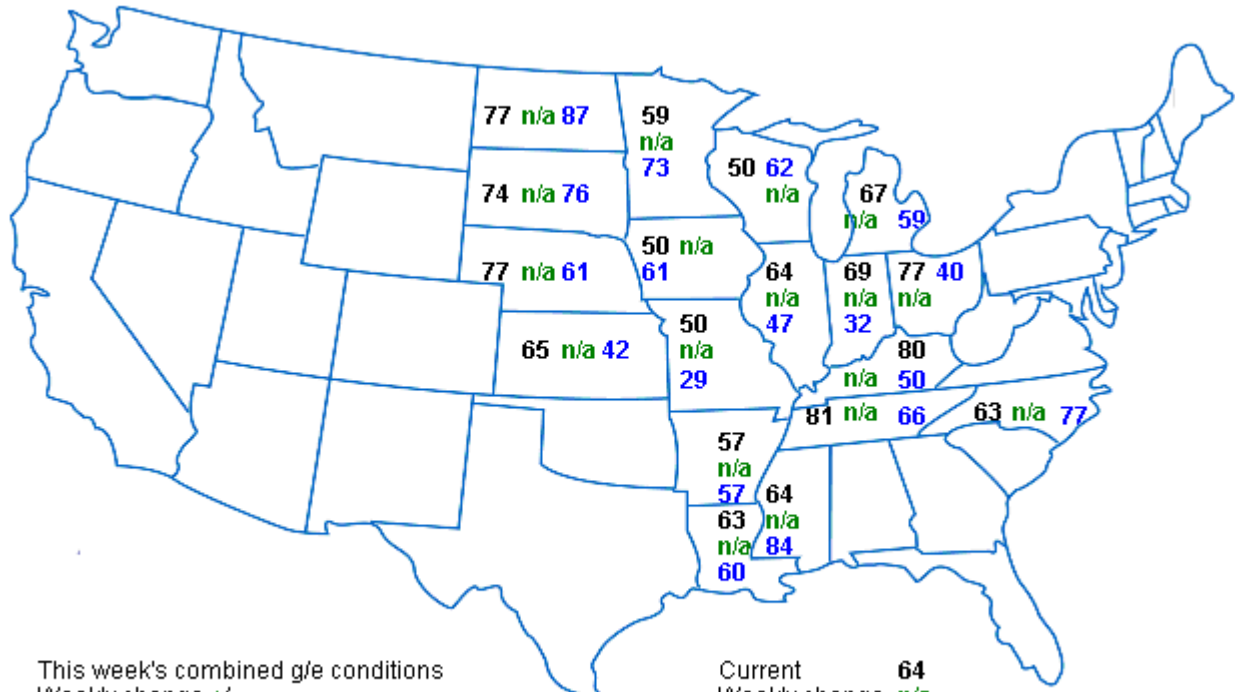


U.S. Estimated Soybean Planted Acres Behind (-)/Ahead (+) of "Average" (as of 6/16/13)

-thousand acres-



U.S. Soybean Conditions



This week's combined g/e conditions
Weekly change +/-
Last year's g/e conditions

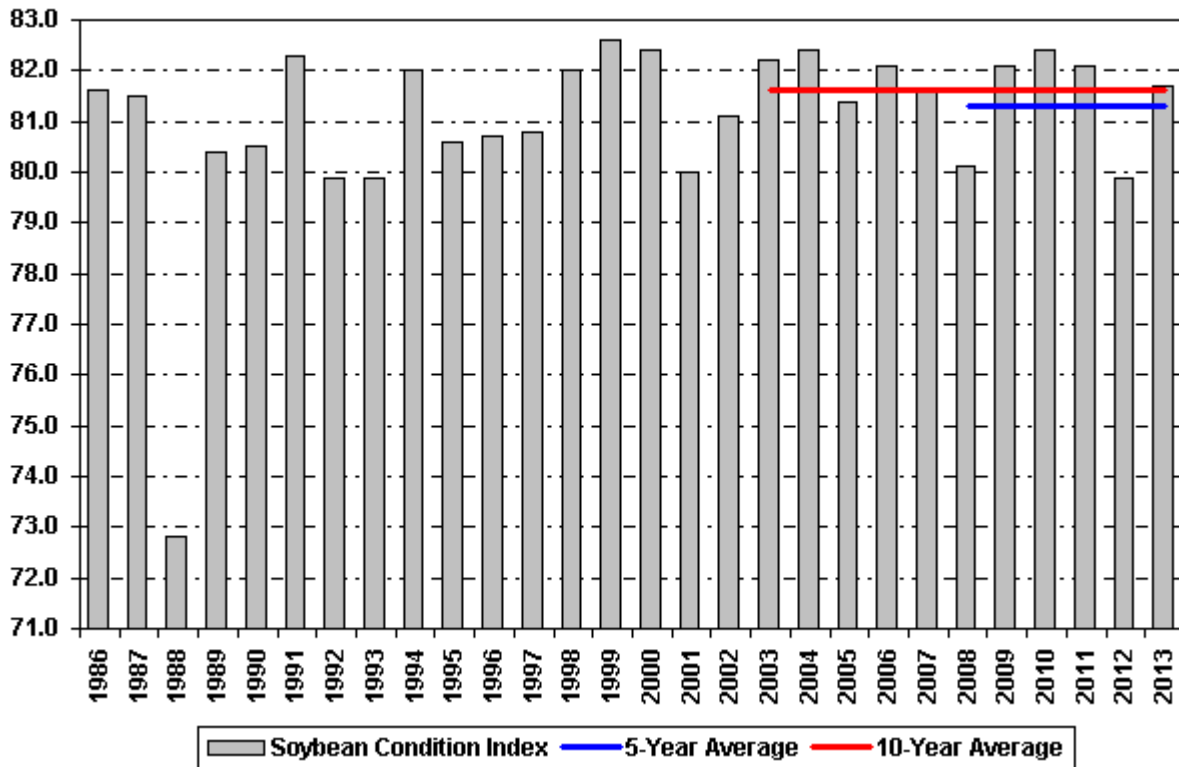
Current **64**
Weekly change **n/a**
Last year **56** U.S. Total for: 16-Jun

U.S. Soybean Crop Conditions

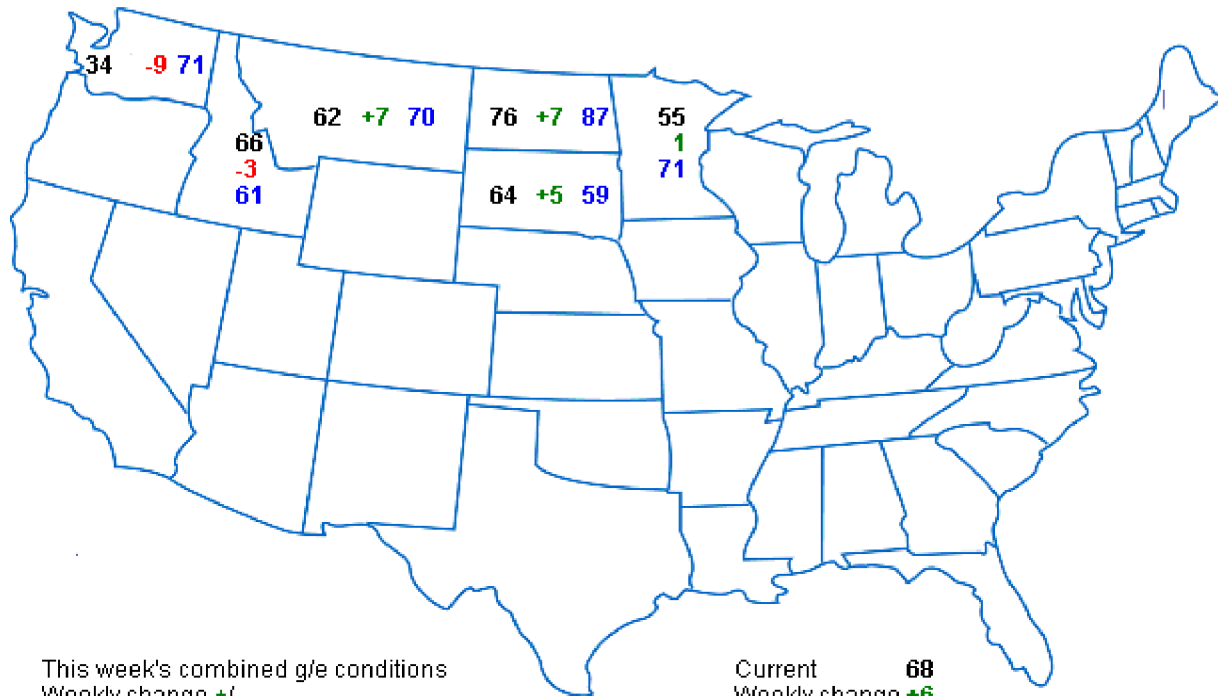
	Combined Good/Excellent				Combined Poor/Very Poor			
	This Week	Last Week	Weekly Change	Last Year	This Week	Last Week	Weekly Change	Last Year
AR	57	n/a	n/a	57	7	n/a	n/a	12
IL	64	n/a	n/a	47	9	n/a	n/a	14
IN	69	n/a	n/a	32	5	n/a	n/a	26
IA	50	n/a	n/a	61	14	n/a	n/a	11
KS	65	n/a	n/a	42	3	n/a	n/a	15
KY	80	n/a	n/a	50	4	n/a	n/a	14
LA	63	n/a	n/a	60	6	n/a	n/a	6
MI	67	n/a	n/a	59	6	n/a	n/a	14
MN	59	n/a	n/a	73	6	n/a	n/a	3
MS	64	n/a	n/a	84	2	n/a	n/a	2
MO	50	n/a	n/a	29	10	n/a	n/a	29
NE	77	n/a	n/a	61	2	n/a	n/a	8
NC	63	n/a	n/a	77	2	n/a	n/a	1
ND	77	n/a	n/a	87	2	n/a	n/a	2
OH	77	n/a	n/a	40	2	n/a	n/a	15
SD	74	n/a	n/a	76	1	n/a	n/a	1
TN	81	n/a	n/a	66	4	n/a	n/a	10
WI	50	n/a	n/a	62	0	n/a	n/a	11
U.S.	64	n/a	n/a	56	6	n/a	n/a	12



RJO MRT U.S. Soybean Crop Condition Index as of Mid-June



U.S. Spring Wheat Conditions



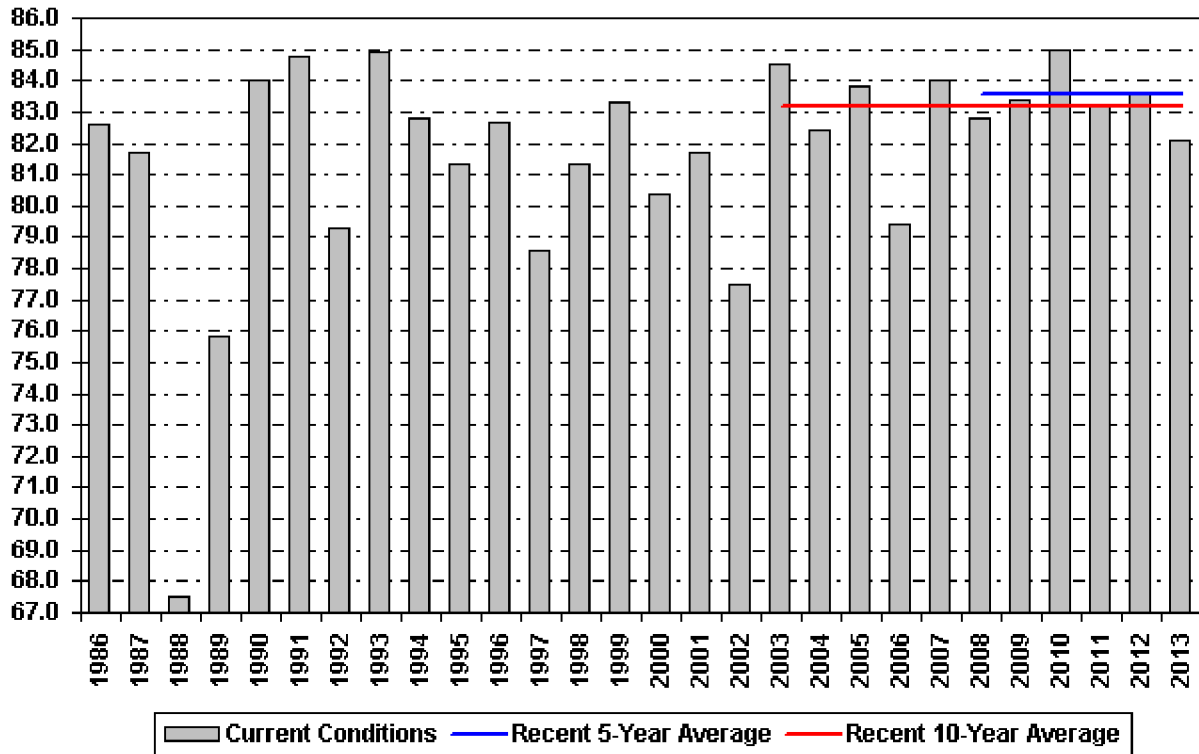
This week's combined g/e conditions
 Weekly change +/-
 Last year's g/e conditions

Current **68**
 Weekly change **+6**
 Last year **76** U.S. Total for: 16-Jun

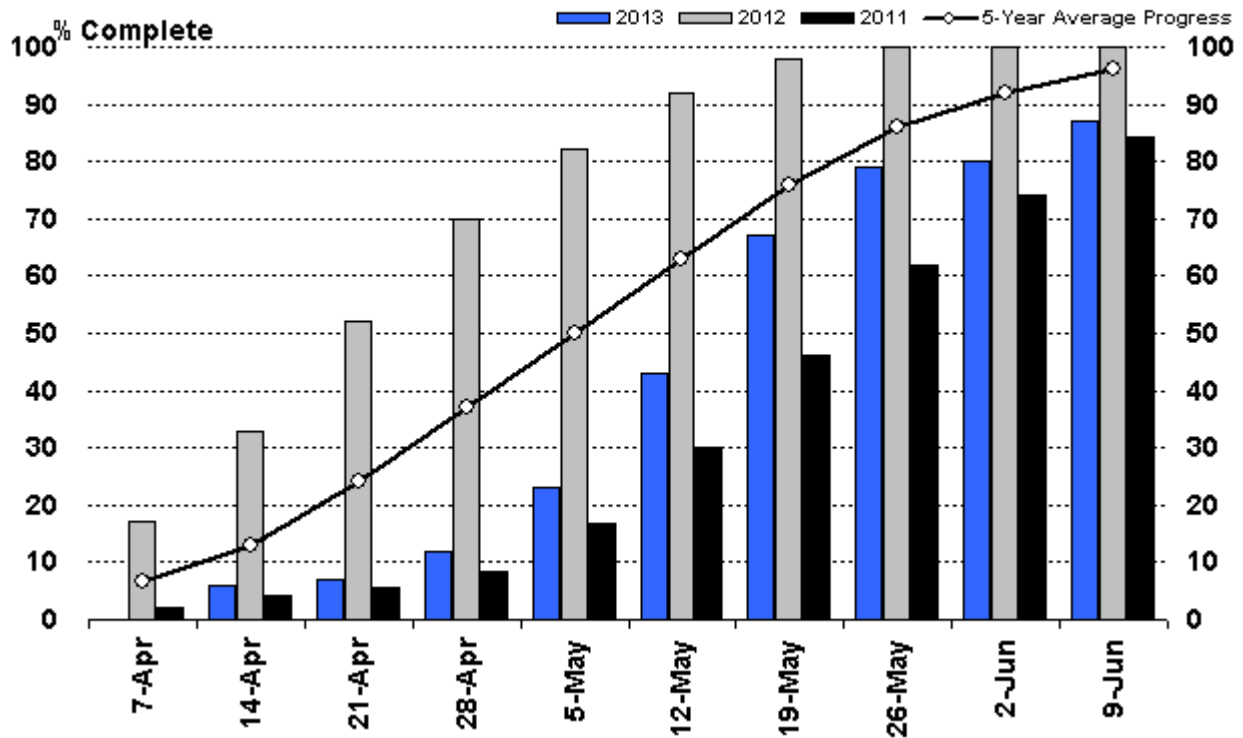
U.S. Spring Wheat Crop Conditions

	Combined Good/Excellent				Combined Poor/Very Poor			
	This Week	Last Week	Weekly Change	Last Year	This Week	Last Week	Weekly Change	Last Year
ID	66	69	-3	61	2	2	+0	1
MN	55	54	+1	71	10	10	+0	6
MT	62	55	+7	70	4	5	-1	6
ND	76	69	+7	87	4	7	-3	1
SD	64	59	+5	59	5	6	-1	3
WA	34	43	-9	71	24	21	+3	2
U.S.	68	62	+6	76	5	7	-2	3

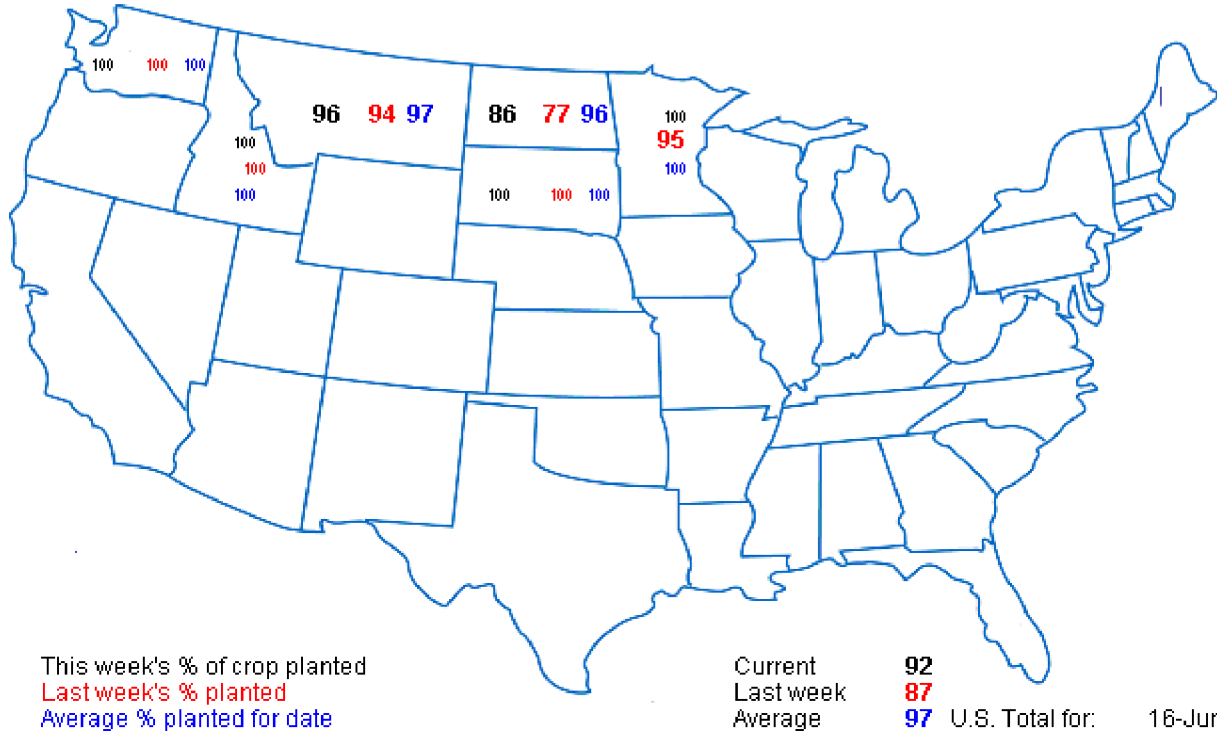
RJO MRT U.S. Spring Wheat Crop Condition Index as of Mid-June



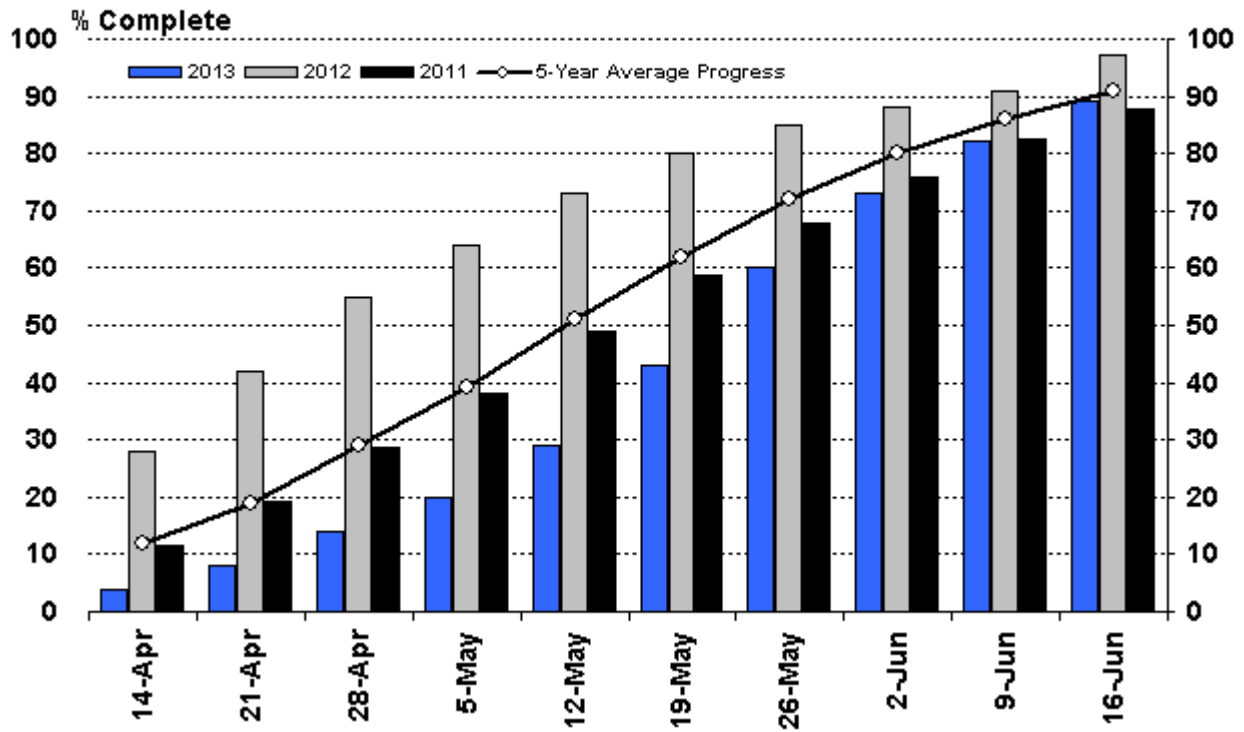
US Spring Wheat Planting Progress



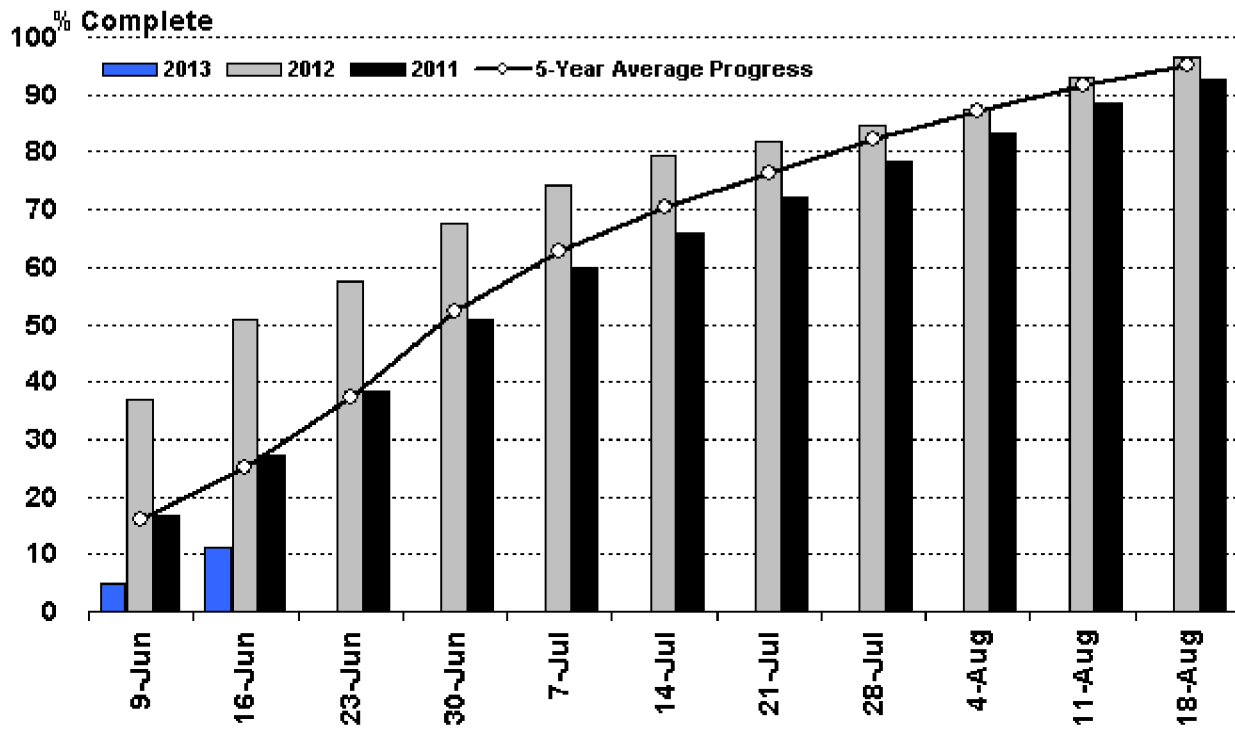
U.S. Spring Wheat Planting Progress



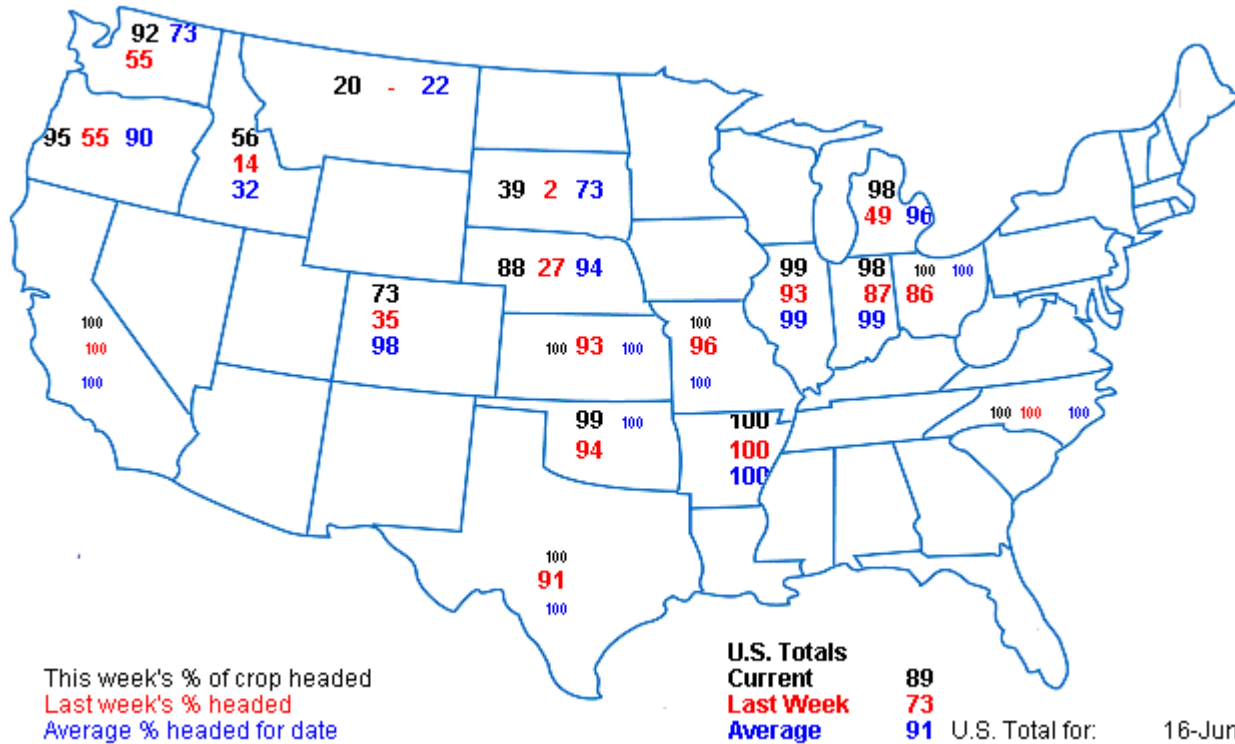
US Winter Wheat Heading Progress



US Winter Wheat Harvest Progress



U.S. Winter Wheat Heading Progress



Please [click here](#) to change your notifications.

RJO Market Research and Trading

This information is not to be construed as an offer to sell or a solicitation or an offer to buy the commodities herein named. The factual information of this report has been obtained from sources believed to be reliable, but is not necessarily all-inclusive and is not guaranteed as to the accuracy, and is not to be construed as representation by R.J. O'Brien & Associates. The risk of trading futures and options can be substantial. Each investor must consider whether this is a suitable investment. Past performance is not indicative of future results. This report contains research as defined in applicable CFTC regulations. Neither the firm nor the research analyst have any positions in these products.

Please note that this account is intended for sole use of the subscribed member. Any information contained on the RJO MRT website may not be reproduced, transmitted, licensed, sold or used for any purpose without express written consent from RJO MRT. Any violation of these rules will result in the immediate termination of website access without notice.

R. J. O'Brien & Associates, LLC Disclaimer:

This material has been prepared by a sales or trading employee or agent of R.J. O'Brien and is, or is in the nature of, a solicitation. This material is not a research report prepared by R.J. O'Brien's Research Department. By accepting this communication, you agree that you are an experienced user of the futures markets, capable of making independent trading decisions, and agree that you are not, and will not, rely solely on this communication in making trading decisions.

DISTRIBUTION IN SOME JURISDICTIONS MAY BE PROHIBITED OR RESTRICTED BY LAW. PERSONS IN POSSESSION OF THIS COMMUNICATION INDIRECTLY SHOULD INFORM THEMSELVES ABOUT AND OBSERVE ANY SUCH PROHIBITION OR RESTRICTIONS. TO THE EXTENT THAT YOU HAVE RECEIVED THIS COMMUNICATION INDIRECTLY AND SOLICITATIONS ARE PROHIBITED IN YOUR JURISDICTION WITHOUT REGISTRATION, THE MARKET COMMENTARY IN THIS COMMUNICATION SHOULD NOT BE CONSIDERED A SOLICITATION.

The risk of loss in trading futures and/or options is substantial and each investor and/or trader must consider whether this is a suitable investment. Past performance, whether actual or indicated by simulated historical tests of strategies, is not indicative of future results. Trading advice is based on information taken from trades and statistical services and other sources that R.J. O'Brien believes are reliable. We do not guarantee that such information is accurate or complete and it should not be relied upon as such. Trading advice reflects our good faith judgment at a specific time and is subject to change without notice. There is no guarantee that the advice we give will result in profitable trades.