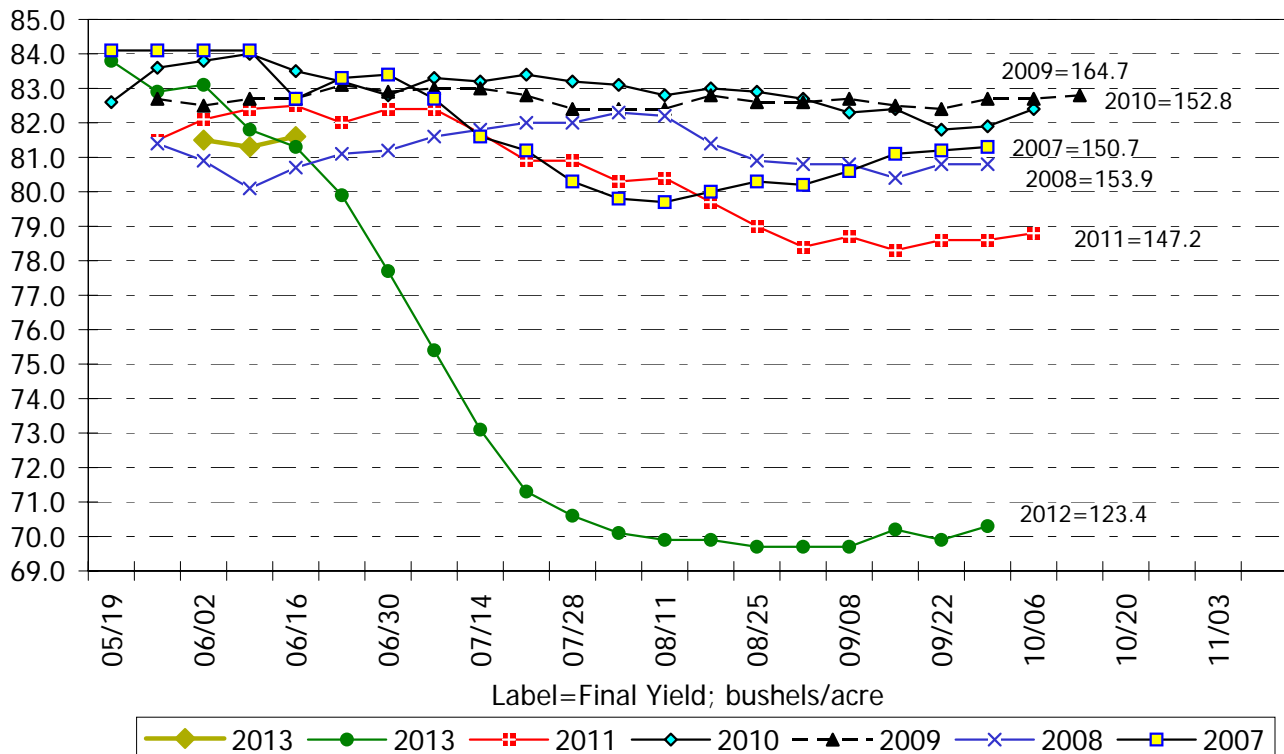


Please see the RJO MRT website at [www.rjomrt.com](http://www.rjomrt.com) for additional graphics related to the weekly USDA Crop Progress reports.

## US Corn Crop Conditions -Percent of Crop Rated in Each Category-

2013/14	Excellent	Good	Fair	Poor	Very Poor	2012/13	Excellent	Good	Fair	Poor	Very Poor
5/19/2013						5/20/2012	15	62	20	2	1
5/26/2013	n/a	n/a	n/a	n/a	n/a	5/27/2012	13	59	23	4	1
6/2/2013	11	52	30	5	2	6/3/2012	15	57	23	4	1
6/9/2013	10	53	29	6	2	6/10/2012	12	54	26	6	2
6/16/2013	12	52	28	6	2	6/17/2012	11	52	28	7	2
6/23/2013						6/24/2012	11	45	30	10	4
6/30/2013						7/1/2012	8	40	30	15	7
7/7/2013						7/8/2012	6	34	30	18	12
7/14/2013						7/15/2012	4	27	31	22	16
7/21/2013						7/22/2012	3	23	29	24	21
7/28/2013						7/29/2012	3	21	28	25	23
8/4/2013						8/5/2012	3	20	27	25	25
8/11/2013						8/12/2012	3	20	26	25	26
8/18/2013						8/19/2012	3	20	26	25	26
8/25/2013						8/26/2012	3	19	26	26	26
9/1/2013						9/2/2012	3	19	26	26	26
9/8/2013						9/9/2012	3	19	26	26	26
9/15/2013						9/16/2012	3	21	26	25	25
9/22/2013						9/23/2012	3	21	25	24	27
9/29/2013						9/30/2012	4	21	25	24	26
10/6/2013						10/7/2012					
10/13/2013						10/14/2012					
10/20/2013						10/21/2012					

## RJOMRT U.S. Corn Crop Condition Weighted Index

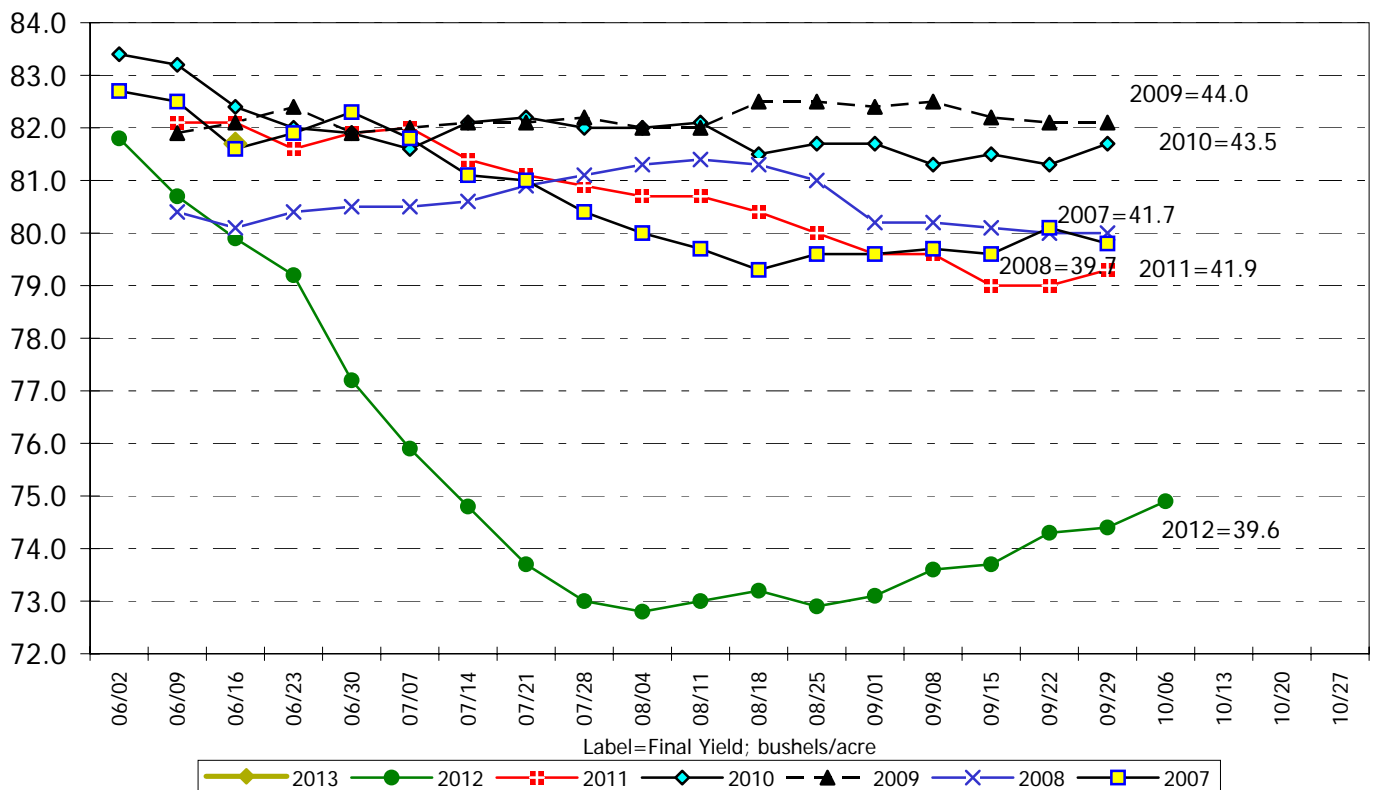


## US Soybean Crop Conditions

-Percent of Crop Rated in Each Category-

2013/14					2012/13					
Excellent	Good	Fair	Poor	Very Poor	Excellent	Good	Fair	Poor	Very Poor	
					6/3/2012	10	55	29	5	1
n/a	n/a	n/a	n/a	n/a	6/10/2012	9	51	30	8	2
10	54	30	5	1	6/17/2012	8	48	32	9	3
					6/24/2012	8	45	32	11	4
					7/1/2012	6	39	33	15	7
					7/8/2012	5	35	33	18	9
					7/15/2012	4	30	36	20	10
					7/22/2012	4	27	34	22	13
					7/29/2012	3	26	34	22	15
					8/5/2012	4	25	32	23	16
					8/12/2012	4	26	32	22	16
					8/19/2012	4	27	32	21	16
					8/26/2012	4	26	32	21	17
					9/2/2012	4	26	33	21	16
					9/9/2012	5	27	32	21	15
					9/16/2012	5	28	31	21	15
					9/23/2012	6	29	31	20	14
					9/30/2012	6	29	32	19	14
					10/7/2012	7	30	31	19	13

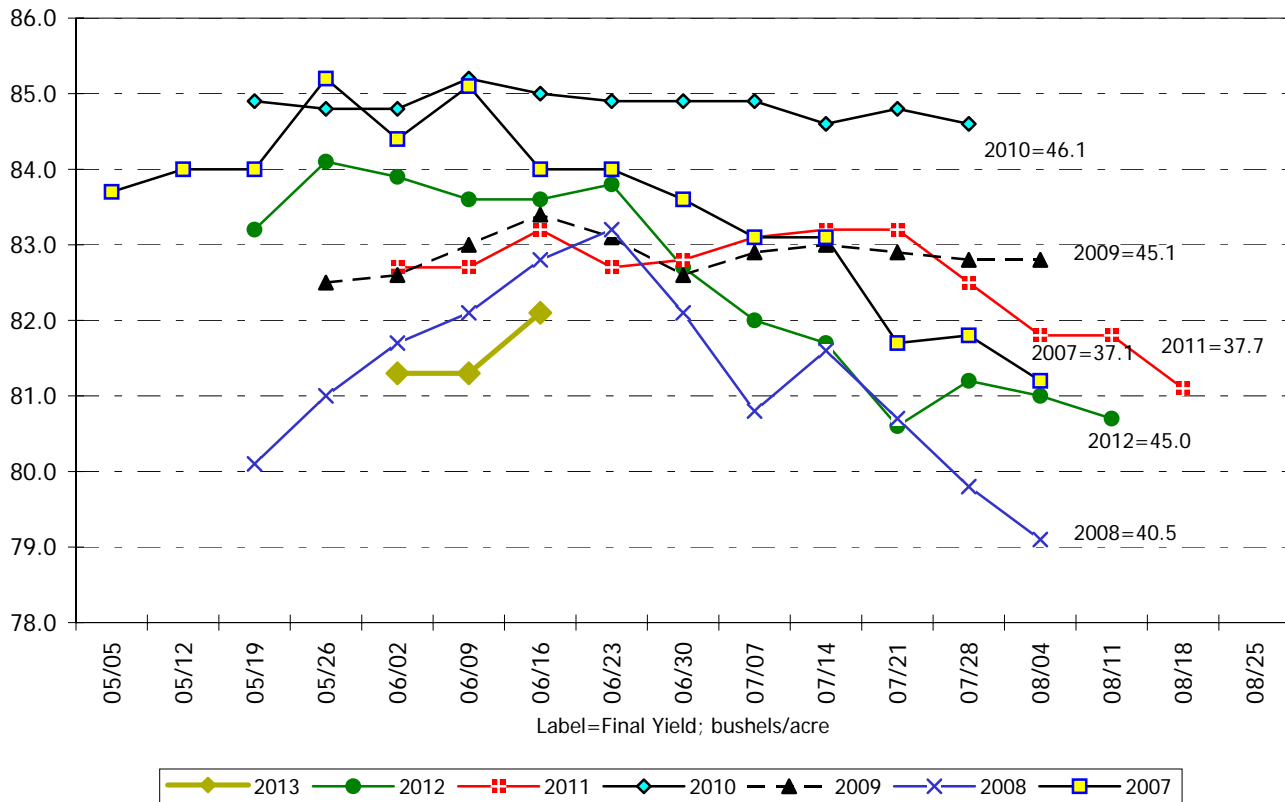
## RJOMRT U.S. Soybean Crop Condition Weighted Index



## US Spring Wheat Crop Conditions -Percent of Crop Rated in Each Category-

2013/14						2012/13					
	Excellent	Good	Fair	Poor	Very Poor		Excellent	Good	Fair	Poor	Very Poor
5/19/2013						5/20/2012	14	60	21	4	1
5/26/2013	n/a	n/a	n/a	n/a	n/a	5/27/2012	14	65	19	2	0
6/2/2013	11	53	28	4	4	6/3/2012	13	65	20	2	0
6/9/2013	10	52	31	5	2	6/10/2012	16	59	21	3	1
6/16/2013	9	59	27	4	1	6/17/2012	14	62	21	2	1
6/23/2013						6/24/2012	16	61	19	3	1
6/30/2013						7/1/2012	12	59	24	4	1
7/7/2013						7/8/2012	12	54	27	6	1
7/14/2013						7/15/2012	11	54	27	7	1
7/21/2013						7/22/2012	9	51	29	9	2
7/28/2013						7/29/2012	12	51	26	9	2
8/4/2013						8/5/2012	10	53	26	9	2
8/11/2013						8/12/2012	9	52	28	9	2
8/18/2013						8/19/2012					
8/25/2013						8/29/2010					

### RJOMRT U.S. Spring Wheat Crop Condition Weighted Index



# RJO MARKET RESEARCH AND TRADING

www.rjomrt.com

## US All Winter Wheat Crop Conditions

-Percent of Crop Rated in Each Category-

2013/14	Exc.	Good	Fair	Poor	Very Poor	2012/13	Exc.	Good	Fair	Poor	Very Poor
3/31/2013	5	29	36	20	10	4/1/2012	12	46	30	9	3
4/7/2013	5	31	34	18	12	4/8/2012	14	47	29	7	3
4/14/2013	5	31	33	19	12	4/15/2012	14	50	25	7	4
4/21/2013	5	30	32	19	14	4/22/2012	15	48	27	7	3
4/28/2013	5	28	32	19	16	4/29/2012	14	50	26	7	3
5/5/2013	5	27	29	20	19	5/6/2012	15	48	25	8	4
5/12/2013	5	27	29	19	20	5/13/2012	14	46	26	9	5
5/19/2013	4	27	28	20	21	5/20/2012	13	45	28	10	4
5/26/2013	5	26	27	19	23	5/27/2012	11	43	29	11	6
6/2/2013	6	26	25	19	24	6/3/2012	12	40	30	12	6
6/9/2013	5	26	27	19	23	6/10/2012	13	40	30	12	5
6/16/2013	6	25	26	19	24	6/17/2012	13	41	29	12	5
6/23/2013						6/24/2012	14	40	29	12	5
6/30/2013						7/1/2012					

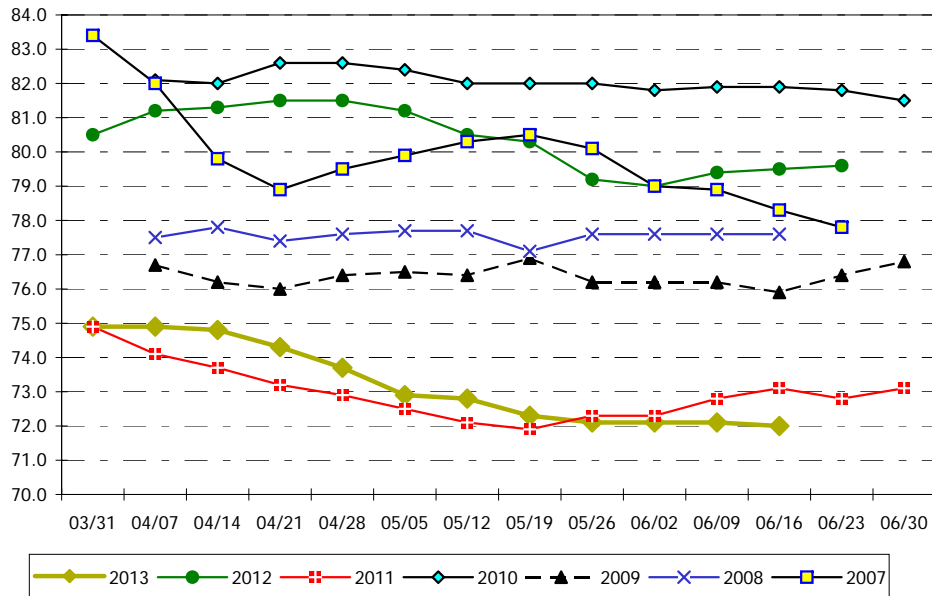
## RJO US Estimated HRW Crop Conditions \*\*

-Percent of Crop Rated in Each Category-

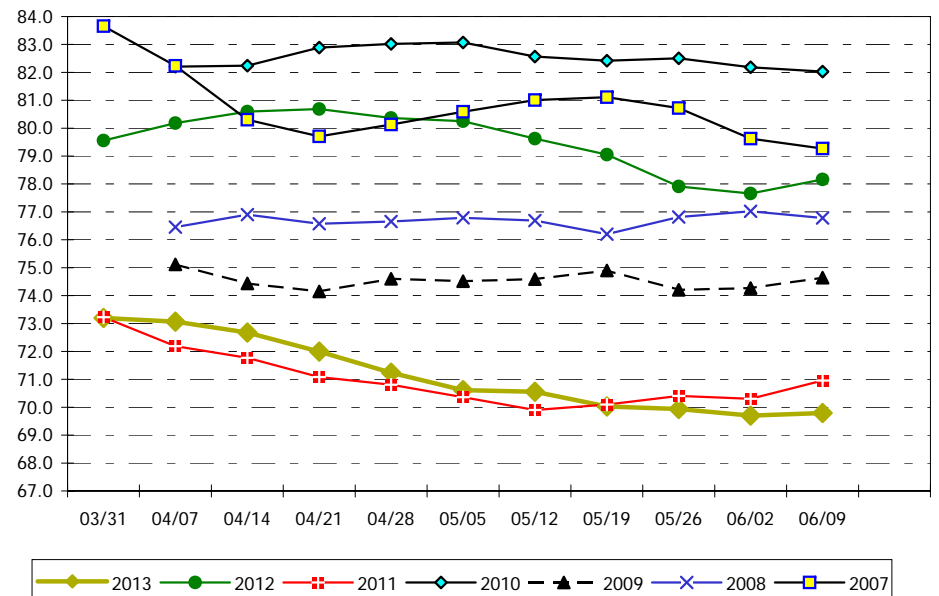
2013/14	Exc.	Good	Fair	Poor	Very Poor	2012/13	Exc.	Good	Fair	Poor	Very Poor
3/31/2013	3	23	37	24	12	4/1/2012	11	42	32	11	4
4/7/2013	4	24	35	21	15	4/8/2012	13	43	30	9	5
4/14/2013	3	23	35	23	15	4/15/2012	14	46	26	8	5
4/21/2013	3	22	33	23	18	4/22/2012	15	45	28	8	5
4/28/2013	3	20	33	23	21	4/29/2012	13	46	28	8	5
5/5/2013	4	20	30	23	24	5/6/2012	13	45	27	9	6
5/12/2013	4	20	29	22	25	5/13/2012	13	43	27	10	7
5/19/2013	3	20	28	23	26	5/20/2012	12	40	30	12	6
5/26/2013	4	19	26	22	28	5/27/2012	10	39	30	13	8
6/2/2013	5	19	25	22	30	6/3/2012	11	36	32	14	8
6/9/2013	4	19	25	22	29	6/10/2012	12	36	31	14	7
6/16/2013	5	19	25	22	30						

\*\* RJO By-Class Winter Wheat Conditions are based on state-level all winter wheat crop conditions applied to weighted state-level by-class acreage data, then combined to achieve a U.S.-wide by-class rating.

## RJOMRT U.S. Winter Wheat Crop Condition Weighted Index



## RJOMRT U.S. Hard Red Winter Wheat Crop Condition Weighted Index



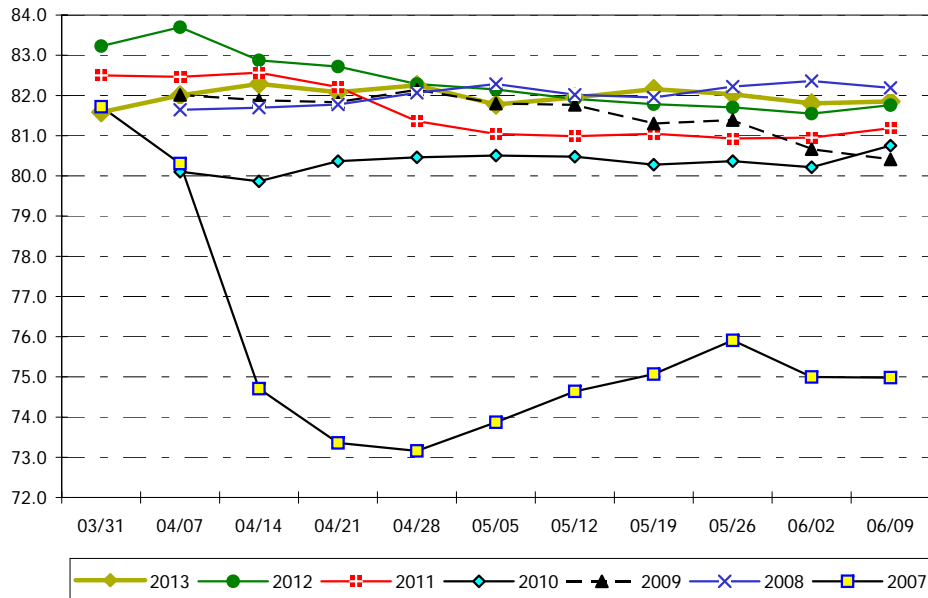
## RJO US Estimated SRW Crop Conditions \*\*

-Percent of Crop Rated in Each Category-

2012/13	Exc.	Good	Fair	Poor	Very Poor	2012/13	Exc.	Good	Fair	Poor	Very Poor
3/31/2013	11	53	29	5	2	4/1/2012	18	54	22	5	1
4/7/2013	12	54	28	4	2	4/8/2012	19	55	21	4	1
4/14/2013	12	56	26	4	2	4/15/2012	16	54	24	5	2
4/21/2013	12	55	25	5	2	4/22/2012	16	54	24	5	1
4/28/2013	14	55	24	5	3	4/29/2012	14	54	25	6	2
5/5/2013	13	54	25	5	3	5/6/2012	14	53	25	6	2
5/12/2013	13	54	24	5	3	5/13/2012	14	52	25	7	2
5/19/2013	14	55	23	5	3	5/20/2012	14	52	26	7	2
5/26/2013	13	56	23	5	3	5/27/2012	13	52	26	7	2
6/2/2013	14	53	24	5	4	6/3/2012	13	50	27	7	2
6/9/2013	13	53	25	5	3	6/10/2012	14	51	27	7	2
6/16/2013	16	52	24	5	3						

\*\* RJO By-Class Winter Wheat Conditions are based on state-level all winter wheat crop conditions applied to weighted state-level by-class acreage data, then combined to achieve a U.S.-wide by-class rating.

### RJOMRT U.S. Soft Red Winter Wheat Crop Condition Weighted Index



## RJO US Estimated Winter White Wheat Crop Conditions \*\*

-Percent of Crop Rated in Each Category-

2013/14	Exc.	Good	Fair	Poor	Very Poor	2012/13	Exc.	Good	Fair	Poor	Very Poor
3/31/2013	15	51	29	4	2	4/1/2012	13	63	20	4	1
4/7/2013	11	56	28	3	2	4/8/2012	14	62	19	4	1
4/14/2013	7	61	27	3	1	4/15/2012	14	67	16	3	0
4/21/2013	11	60	22	5	2	4/22/2012	18	59	18	4	0
4/28/2013	12	55	25	4	3	4/29/2012	15	68	14	3	0
5/5/2013	10	56	25	6	4	5/6/2012	20	62	14	3	1
5/12/2013	7	51	28	9	4	5/13/2012	19	63	14	3	1
5/19/2013	6	50	30	9	4	5/20/2012	13	67	16	3	1
5/26/2013	7	49	27	10	7	5/27/2012	16	63	16	4	1
6/2/2013	8	50	25	9	7	6/3/2012	16	63	16	4	1
6/9/2013	6	48	29	11	6	6/10/2012	20	58	17	4	1
6/16/2013	7	45	29	12	8						

\*\* RJO By-Class Winter Wheat Conditions are based on state-level all winter wheat crop conditions applied to weighted state-level by-class acreage data, then combined to achieve a U.S.-wide by-class rating.

### RJOMRT U.S. Winter White Wheat Crop Condition Weighted Index

